



VØRUKATALOG

PRODUCT CATALOG





KU HYDRAULIK
POWER & MOTION CONTROL



UM KJ

ABOUT KJ

Síðani stovnan felagsins í 1978, hevur KJ havt støðugan vøkstur og staðið í menning. Við umleið 150 starvsfólkum, sjev deildum í Føroyum og Danmark, umframt einum vaksandi kundaskarða í Føroyum, Íslandi, Hetlandi og Noregi, er KJ ein álitandi og viðurkendur veitari í Norður-atlandshavinum.

Fyrirøka okkara, KJ, staðfestur styrki í úttinnandi trúfesti til góðsku og framburð. Vit standa trúføst í vinnuni, ikki einans í okkara eginleika at veita hágóðsku vørur og tænastr, men eisini tí, at okkara lyfti er, at veita trivnaðarfremjandi arbeiðsumhvørvi, ið eggjar til besta avrik frá okkara starvsfólki.

Fyri okkum er starvsfólk okkara grundarsteinurin undir okkara virkseimi. Tískil er okkara vøkstur og menning treytað av teirra eydnu. Við at gera íløgur í okkara starvsmegi og við at menna okkara starvsmentan, vaksa vit um nýhugsan, samstarv og áhaldandi lærdóm, samstundis sum vit ferð eftir ferð liva upp til krøvini, ið vinnan setur okkum.

KJ er ein dynamisk fyrirøka við einum sterkum toymi, ið arbeiða innan tríggar høvuðsgeirar. Fyrirøkan er væl umboðað í sjóvinnuni, har vit spæla ein týðningarmiklan leiklut í flutningi, goymslu og tilhoyrandi tænastrum. Harafturat er KJ á serstakari rók í alivinnuni har dentur verður settur á hágóðsku framleiðslu og arbeiðslag. Okkara virkseimi á landi, er triði høvuðsgeirin. Her veita vit maskinur innan byggivinnuna og tilhoyrandi lutir.

Since its foundation in 1978, KJ has witnessed substantial growth and development. With roughly 150 staff members, 7 departments in the Faroe Islands and Denmark and a growing clientele in the Faroe Islands, Iceland, Shetland and Norway, KJ is a well-established and trusted supplier in the North Atlantic.

Our company, KJ, stands as a testament to the power of unwavering commitment to quality and the pursuit of excellence. We owe our prominence in the industry to not only our ability to deliver superior products and services but also our pledge to foster a work environment that encourages peak performance from our dedicated team.

We believe that our employees are the backbone of our enterprise, and their growth and development are integral to our overall success. By investing in our workforce and cultivating a culture that values innovation, collaboration, and continual learning, we are able to consistently meet and exceed industry standards.

KJ is a diversified business entity with a robust operational framework that spans across three major sectors. The company has a significant presence in the Maritime sector, playing a vital role in shipping, logistics, and maritime services. Additionally, KJ has carved out a substantial niche for itself in aquaculture, focusing on sustainable fish farming practices and contributing to the stability of food resources. Lastly, the industrial activities on land comprise the third pillar of KJ's operations, with the company engaging in construction machinery, logistics equipment and various industrial services.



GOYMSLAN

THE WAREHOUSE

KJ er sum veitari sera errin av, og raðfestur høgt, at hava eina sterka goymslu. Við meir enn 25.000 ymiskum vørum til vinnuna, eru vit klár at liva upp til krøv frá okkara kundum. Harvið tryggja vit, at vit eru ein viðspælari til vinnuna. Um ein kundi ynskir eina vøru, ið ikki er á goymslu í tí løtu, hon verður umbiðin, leypur okkara sterka toymi heilhjartað í aktión. Har verður okkara serkunnleiki prógvaður og okkara sterka netverk gagnnýtt. Á hendan hátt stytta vit um biðitíðina hjá kundinum.

Harafturat er söludeildin hjá KJ mannað av dugnaligum sölufólki, ið altíð er klár at hjálpa og ráðgeva, soleiðis at kundin fær júst tað, honum tørvar. Okkara serkunnleiki er innan eitt sera stórt úrval av vørum, og prógvar hetta, at okkara netverk og okkara arbeiðsmegi er inngrógvin í okkara tænastrá.

Um tú hevur ein fyrispurning, skalt tú vera hjartaliga vælkomin at ringja til okkara sölubúð ella at ringja til sölutoymið, beinleiðis á +298 40 70 00. Eisini ert tú vælkomin at senda teldupost á soludeild@kj.fo. Eitt sölufólk verður skjótt sett á sakina, so tú færst tín tørv nøktaðan.

KJ prides itself on an extensive and diverse inventory that encompasses an impressive array of over 25,000 unique items tailored to the maritime industry. Our store is fully stocked to meet the immediate needs of our customers, ensuring that we serve as a one-stop shop for maritime supplies. If, on the rare occasion, a client requires a product that is not readily available in our inventory, our dedicated team springs into action, utilizing their expertise and extensive network to procure the item posthaste, thereby minimizing any potential downtime for our customers.

Furthermore, KJ's sales department is staffed by skilled sales engineers and they are prepared and eager to assist in the selection process, ensuring that every customer finds precisely what they require for their maritime operations. Our capacity to procure a vast range of products is a testament to the robust connections and resourcefulness embedded in our service ethos.

For any inquiries or specialized service requests, customers are encouraged to reach out to our store or contact the sales department directly at +298 40 70 00, or send an email to sales@kj.fo. A sales engineer will promptly engage with you to facilitate your needs.

Tel +298 40 70 00
T-post soludeild@kj.fo

Bústaður
Fagrafil 2
530 Kambsdalur
Føroyar

Tel +298 40 70 00
E-mail sales@kj.fo

Address
Fagrafil 2
530 Kambsdalur
Faroe Islands





INNIHALDSYVIRLIT

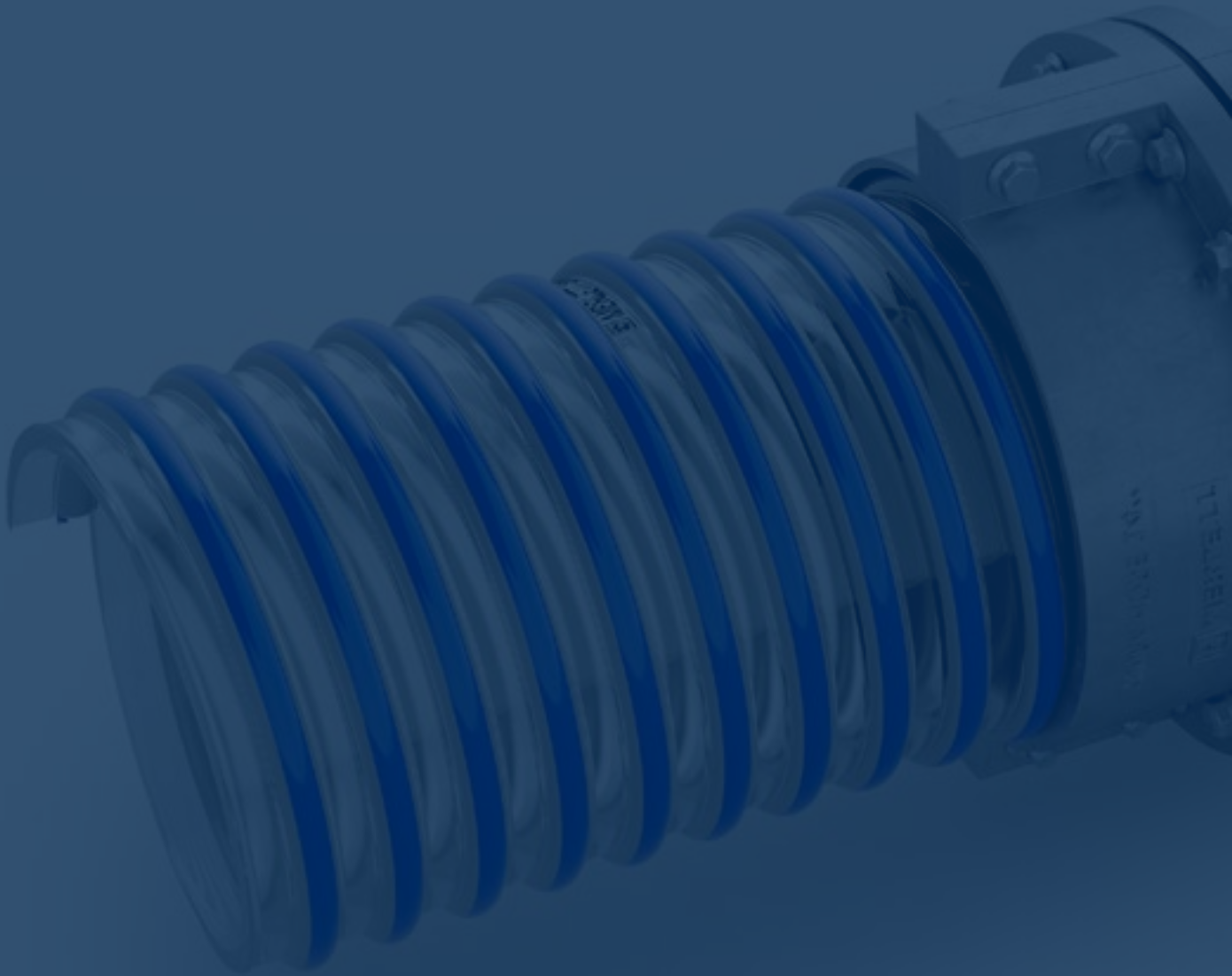
TABLE OF CONTENTS



INNIHALDSYVIRLIT

TABLE OF CONTENTS

| | |
|---|---|
| INDUSTRISLANGUR _____ 9 | HYDRAULIK VENTILAR OG |
| INDUSTRIAL HOSES | MAGNETSPOLAR _____ 61 |
| | HYDRAULIC VALVES AND MAGNETIC-COILS |
| INDUSTRI KOBLINGAR _____ 23 | LUFT _____ 63 |
| COUPLINGS | PNEUMATICS |
| FISKASLANGUR OG FITTINGS _____ 27 | KEMIKALIIR _____ 67 |
| FISH PUMP HOSES AND FITTINGS | CHEMICALS |
| HYDRAULIKKSLANGUR _____ 31 | KEMI _____ 73 |
| HYDRAULIC HOSES | CHEMISTRY |
| RØR- OG SLANGUFITTINGS, | PAKNINGAR _____ 79 |
| HYDRAULIKKUR _____ 35 | SEALS |
| PIPE AND HOSE FITTINGS, HYDRAULICS | RØR- OG SLANGUKLEMMUR _____ 81 |
| FILTUR OG FILTURHÚSAR _____ 39 | TUBE AND HOSE CLAMPS |
| FILTERS AND FILTER HOUSINGS | RØRFITTINGS _____ 85 |
| HYDRAULIK PUMPUR, MOTORAR | TUBE FITTINGS |
| OG KØLARAR _____ 45 | RØR _____ 89 |
| HYDRAULIC PUMPS, MOTORS AND COOLERS | TUBES |
| VATNPUMPUR _____ 49 | |
| WATER PUMPS | |
| LEGUR OG TRANSMISSIÓNIR _____ 53 | |
| BEARINGS AND TRANSMISSIONS | |
| INDUSTRIVENTILAR _____ 55 | |
| INDUSTRY VALVES | |
| SEPERATORAR _____ 59 | ALFABETISKT INNIHALDSYVIRLIT _____ 93 |
| SEPERATORS | TABLE OF CONTENTS IN ALPHABETICAL ORDER |





INDUSTRISLANGUR

INDUSTRIAL HOSES



LUISIANA SUPERELASTICS

LUISIANA SUPERELASTICS

Spiralsúgvíslanga úr PVC plasti, við stívum PVC spirali. Til gjögnumrenning og súgving av ymiskari vætu. Fæst bæði við hvítum og grønum spirali. Slangan er klár og gløtt innvendiga.

PVC hose with rigid PVC spiral, for delivery and suction of liquids. Available in both white and green spiral. The hose is transparent and smooth surface inside.



| Ø NOMINAL Ø NOMINAL | Ø NOMINAL Ø NOMINAL | INNARI DIAMETUR Ø I.D. | UTTARI DIAMETUR Ø O.D. | ARBEIÐSTRÝST WORKING PRESSUR | VAKUUM VACUUM | BRESTIPUNKT BURSTING PRESS. | TOTAL TJÚKT TOTAL THICKNESS | VEKTMETUR WEIGHT METER |
|------------------------|------------------------|---------------------------|---------------------------|---------------------------------|--------------------|--------------------------------|--------------------------------|---------------------------|
| mm | inch | mm | mm | bar | m/H ₂ O | bar | mm | g/m |
| 19 | | 19 | 24,6 | 6,5 | 7 | 19,5 | 2,8 | 250 |
| 20 | | 20 | 26,2 | 6,5 | 7 | 19,5 | 3,1 | 275 |
| 25 | 1 | 25 | 31,6 | 6,5 | 7 | 19,5 | 3,3 | 330 |
| 30 | | 30 | 37 | 5,5 | 7 | 16,5 | 3,5 | 420 |
| 32 | 1 1/4 | 32 | 39,2 | 5,5 | 7 | 16,5 | 3,6 | 460 |
| 35 | | 35 | 41,8 | 5 | 7 | 15 | 3,4 | 500 |
| 38 | 1 1/2 | 38 | 45,4 | 4,5 | 7 | 13,5 | 3,7 | 550 |
| 40 | | 40 | 47,8 | 4,5 | 7 | 13,5 | 3,9 | 610 |
| 45 | 1 3/4 | 45 | 52,8 | 4 | 7 | 12 | 3,9 | 670 |
| 50 | 2 | 50 | 58,2 | 3,5 | 7 | 10,5 | 4,1 | 810 |
| 51 | 2 | 51,3 | 59,5 | 3,5 | 7 | 10,5 | 4,1 | 810 |
| 55 | | 55 | 63,6 | 3,5 | 7 | 10,5 | 4,3 | 860 |
| 60 | | 60 | 69 | 3,5 | 7 | 10,5 | 4,5 | 970 |
| 63 | 2 1/2 | 63 | 71,2 | 3,5 | 7 | 10,5 | 4,1 | 1040 |
| 70 | | 70 | 79 | 3,5 | 7 | 10,5 | 4,5 | 1200 |
| 75 | | 75 | 85,4 | 2,5 | 7 | 7,5 | 5,2 | 1380 |
| 76 | 3 | 76 | 86 | 2,5 | 7 | 7,5 | 5 | 1380 |
| 80 | | 80,2 | 90,8 | 2,5 | 7 | 7,5 | 5,3 | 1560 |
| 90 | 3 1/2 | 90 | 100,4 | 2,5 | 7 | 7,5 | 5,2 | 1800 |
| 100 | | 100 | 112 | 2,5 | 7 | 7,5 | 6 | 2160 |
| 102 | 4 | 102,3 | 113,9 | 2,5 | 7 | 7,5 | 5,8 | 2200 |
| 110 | | 110 | 122 | 2,5 | 5 | 7,5 | 6 | 2400 |
| 120 | | 120 | 132,4 | 2,5 | 5 | 7,5 | 6,2 | 2850 |
| 125 | | 125 | 137,6 | 2 | 5 | 6 | 6,3 | 3130 |
| 127 | 5 | 127 | 140,6 | 2 | 5 | 6 | 6,8 | 3130 |
| 150 | | 150 | 164,4 | 2 | 5 | 6 | 7,2 | 4250 |
| 152 | 6 | 152,4 | 167,2 | 2 | 5 | 6 | 7,4 | 4250 |
| 200 | | 200 | 218,2 | 1 | 5 | 3 | 9,1 | 6400 |
| 204 | 8 | 203,2 | 221,2 | 1 | 5 | 3 | 9 | 6400 |

Notes:

Bending radius: According to UNI EN ISO 10619- 1, A1.

OREGON PU PS REYÐ

OREGON PU PS RED

Spiralsúgvíslanga við reyðum PVC spirali. Verður mest nýtt til fiskaflutning. Slangan er klár og gløtt innvendiga.

Spiral hose with PVC-made spiral in red. Mostly used for transport of fish. The hose is transparent and smooth surface inside.



| Ø NOMINAL Ø NOMINAL | Ø NOMINAL Ø NOMINAL | INNARI DIAMETUR Ø I.D. | UTTARI DIAMETUR Ø O.D. | ARBEIÐSTRÝST WORKING PRESSURE | VAKUUM VACUUM | TOTAL TJÚKT TOTAL THICKNESS | TJÚKT Á VEGGI MIN DEPTH PU | VEKTMETUR WEIGHT METER |
|------------------------|------------------------|---------------------------|---------------------------|----------------------------------|--------------------|--------------------------------|-------------------------------|---------------------------|
| mm | inch | mm | mm | bar | m/H ₂ O | mm | mm | g/m |
| 51 | 2 | 51,2 | 60,7 | 1,5 (*) | 6 (*) | 4,8 | 0,8 | 600 |
| 63 | 2 1/2 | 62,5 | 71,3 | 1,3 (*) | 5,5 (*) | 4,4 | 0,8 | 680 |
| 76 | 3 | 76,6 | 86,4 | 1,3 (*) | 5,5 (*) | 4,9 | 0,8 | 800 |
| 89 | 3 1/2 | 89,7 | 100,7 | 1,3 (*) | 5,5 (*) | 5,5 | 0,8 | 1120 |
| 102 | 4 | 102,8 | 114,8 | 1 | 5 (*) | 6 | 0,9 | 1200 |
| 110 | | 110 | 122 | 1 | 5 (*) | 6 | 1 | 1270 |
| 127 | 5 | 128 | 142 | 1 | 5 (*) | 7 | 0,8 | 1800 |
| 152 | 6 | 152,2 | 165,8 | 0,7 | 4,5 (*) | 6,8 | 0,6 | 2000 |
| 160 | | 160 | 176 | 0,7 | 4,5 (*) | 8 | 1 | 2250 |
| 200 | | 200 | 216,2 | 0,5 | 4 (*) | 8,1 | 0,9 | 3100 |
| 203 | 8 | 203 | 220,2 | 0,5 | 4 (*) | 8,6 | 1 | 3300 |
| 250 | | 250 | 270,6 | 0,3 | 4 (*) | 10,3 | 1,7 | 3900 |

Notes:

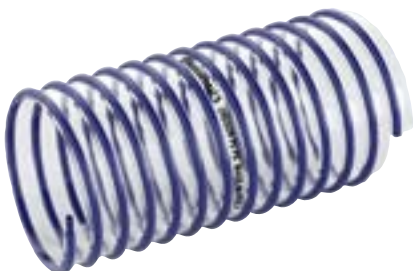
Working and bursting pressure: according to ISO 1402
Bending radius at 23°C: According to UNI EN ISO 10619-1, A1

OREGON PU PS BLÁ

OREGON PU PS BLUE

Spiralsúgvíslanga við bláum PVC spirali. Verður mest nýtt til fiskaflutning. Slangan er klár og gløtt innvendiga.

Spiral hose with PVC-made spiral in blue. Mostly used for transport of fish. The hose is transparent and smooth surface inside.



| Ø NOMINAL Ø NOMINAL | Ø NOMINAL Ø NOMINAL | INNARI DIAMETUR Ø I.D. | UTTARI DIAMETUR Ø O.D. | ARBEIÐSTRÝST WORKING PRESSURE | VAKUUM VACUUM | TOTAL TJÚKT TOTAL THICKNESS | TJÚKT Á VEGGI MIN DEPTH PU | VEKTMETUR WEIGHT METER |
|------------------------|------------------------|---------------------------|---------------------------|----------------------------------|--------------------|--------------------------------|-------------------------------|---------------------------|
| mm | inch | mm | mm | bar | m/H ₂ O | mm | mm | g/m |
| 50,8 | 2 | 50,8 | 58,8 | 0,6 | 4,5 | 4 | 0,8 | 460 |
| 63,5 | 2 1/2 | 63,5 | 72,5 | 0,6 | 4,5 | 4,5 | 0,8 | 580 |
| 76 | 3 | 76,2 | 84,4 | 0,6 | 4,5 | 4,2 | 0,9 | 700 |
| 90 | | 90 | 99,2 | 0,5 | 4,5 | 4,6 | 0,9 | 900 |
| 102 | 4 | 101,6 | 111,6 | 0,5 | 4,5 | 5 | 1 | 1050 |
| 110 | | 110 | 121,4 | 0,5 | 4 | 5,7 | 1 | 1200 |
| 127 | 5 | 127 | 138,6 | 0,5 | 3,5 | 5,8 | 1,1 | 1400 |
| 152 | 6 | 152,4 | 165,4 | 0,5 | 2,5 | 6,5 | 1,1 | 1800 |
| 160 | | 160 | 173,6 | 0,4 | 1,5 | 6,8 | 1,1 | 2000 |
| 203 | 8 | 203,2 | 218 | 0,3 | 1 | 7,4 | 1,2 | 2700 |
| 254 | 10 | 254 | 270 | 0,2 | 1 | 8 | 1,7 | 3900 |
| 305 | 12 | 305 | 321 | 0,2 | 1 | 8 | 2 | 4800 |

Notes:

Working and bursting pressure: according to ISO 1402
Bending radius at 23°C: According to UNI EN ISO 10619-1, A1



SUPERFLEX PU R

SUPERFLEX PU R

PU spiralslanga við styrktum koparspirali. Til gjøgnumrenning av dusti og brúningarevni. Verður nógv nýtt innan súgving av sandi og fódri. Slangan er klár.

POLYURETHANE (PU) hose with copper-plated steel spiral, for suction and transport of dust, chips and abrasive material. The hose is transparent.



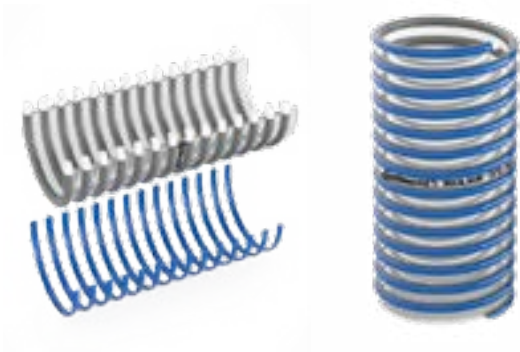
| INNARI DIAMETUR Ø NOMINAL | INNARI DIAMETUR Ø NOMINAL | UTTARI DIAMETUR Ø O.D. | VAKUUM VACUUM | TJÚKT Á VEGGI WALL THICKNESS | Ø, STÁLVEIRUR Ø STEEL WIRE | MÁT MILLUM SPIRALAR SPIRAL PITCH | VEKTMETUR WEIGHT METER |
|------------------------------|------------------------------|---------------------------|--------------------|---------------------------------|-------------------------------|-------------------------------------|---------------------------|
| mm | mm | mm | m/H ₂ O | mm | mm | mm | g/m |
| 30 | 31 | 35 | 5,5 | 0,5 | 1 | 10 | 140 |
| 35 | 36 | 40 | 5 | 0,5 | 1 | 10 | 160 |
| 38 | 39 | 43 | 4,8 | 0,5 | 1 | 9,8 | 180 |
| 40 | 41 | 45 | 4,5 | 0,5 | 1 | 10 | 200 |
| 45 | 46 | 50 | 4 | 0,5 | 1 | 10 | 220 |
| 50 | 51 | 55 | 3,5 | 0,55 | 1,2 | 12 | 280 |
| 55 | 56 | 60 | 3 | 0,55 | 1,2 | 12 | 300 |
| 60 | 61 | 65 | 3 | 0,55 | 1,2 | 12 | 330 |
| 63 | 64 | 68 | 2,5 | 0,55 | 1,2 | 12 | 350 |
| 70 | 71 | 77 | 2,5 | 0,6 | 1,4 | 14 | 420 |
| 75 | 76 | 82 | 2 | 0,6 | 1,4 | 14 | 440 |
| 80 | 81 | 87 | 2 | 0,6 | 1,4 | 14 | 480 |
| 85 | 86 | 92 | 2 | 0,6 | 1,4 | 14 | 500 |
| 90 | 91 | 97 | 2 | 0,6 | 1,4 | 14 | 520 |
| 100 | 101 | 107 | 1,5 | 0,65 | 1,6 | 16 | 660 |
| 110 | 111 | 117 | 1,5 | 0,65 | 1,6 | 16 | 720 |
| 120 | 121 | 127 | 1,5 | 0,65 | 1,6 | 16 | 780 |
| 125 | 126 | 132 | 1,5 | 0,65 | 1,6 | 16 | 800 |
| 128 | 128,5 | 134,5 | 1,5 | 0,65 | 1,6 | 16 | 820 |
| 130 | 131 | 137 | 1,5 | 0,65 | 1,6 | 16 | 840 |
| 140 | 141 | 147 | 1,5 | 0,65 | 1,6 | 16 | 900 |
| 150 | 151 | 157 | 1 | 0,7 | 1,8 | 18 | 1100 |
| 160 | 161 | 167 | 1 | 0,7 | 1,8 | 18 | 1160 |
| 170 | 171 | 177 | 1 | 0,7 | 1,8 | 18 | 1240 |
| 173 | 173 | 179 | 1 | 0,7 | 1,8 | 18 | 1250 |
| 180 | 181 | 187 | 1 | 0,7 | 1,8 | 18 | 1300 |
| 200 | 201 | 207 | 1 | 0,7 | 1,8 | 18 | 1440 |
| 220 | 221 | 227 | 0,5 | 0,7 | 1,8 | 18 | 1580 |
| 225 | 226 | 232 | 0,5 | 0,7 | 1,8 | 18 | 1620 |
| 250 | 252 | 259 | 0,5 | 0,8 | 2 | 22 | 1880 |
| 280 | 282 | 289 | 0,5 | 0,8 | 2 | 22 | 2100 |
| 300 | 302 | 309 | 0,4 | 0,8 | 2 | 22 | 2250 |
| 325 | 327 | 334 | 0,4 | 0,8 | 2 | 22 | 2450 |
| 350 | 352 | 359 | 0,4 | 0,8 | 2 | 22 | 2600 |
| 400 | 402 | 409 | 0,4 | 0,8 | 2 | 22 | 3000 |
| 450 | 452 | 459 | 0,4 | 0,8 | 2 | 22 | 3350 |

SHARK SLANGA

SHARK HOSE

Spiralsúgvíslanga úr PVC plasti, við stívum og stoytdyggum PVC spirali. Verður mest nýtt til fiskaflutning. Slangan er klár og gløtt innvendiga.

PVC hose with PVC rigid shockproof spiral, for fish farming and carrying fish products. The hose is smooth on the inside and transparent.



| Ø NOMINAL Ø NOMINAL | Ø NOMINAL Ø NOMINAL | INNARI DIAMETUR Ø I.D. | UTTARI DIAMETUR Ø O.D. | ARBEIÐSTRÝST WORKING PRESSURE | VAKUUM VACUUM | BRESTIPUNKT BURSTING PRESS. | TJÚKT Á VEGGI MIN DEPTH PU | VEKTMETUR WEIGHT METER |
|------------------------|------------------------|---------------------------|---------------------------|----------------------------------|--------------------|--------------------------------|-------------------------------|---------------------------|
| mm | inch | mm | mm | bar | m/H ₂ O | bar | mm | g/m |
| 102 | 4 | 101,6 | 120 | 2,5 | 9 | 7,5 | 9,2 | 3250 |
| 152 | 6 | 152,4 | 175,4 | 2 | 9 | 6 | 11,5 | 5600 |
| 203 | 8 | 203,2 | 230 | 2 | 9 | 6 | 13,5 | 9200 |
| 254 | 10 | 254 | 290 | 1,5 | 9 | 4,5 | 18 | 14500 |
| 305 | 12 | 304,8 | 344,8 | 1,5 | 9 | 4,5 | 20 | 19000 |
| 355 | 14 | 356 | 396 | 1,25 | 9 | 3,7 | 20 | 22000 |
| 407 | 16 | 407 | 450 | 1 | 9 | 3 | 21,5 | 28000 |

Viðmerkingar/Notes:

Arbeiðs- og brestipunkt: Sambært ISO 1402

Radius á bendi á 23 °C: Sambært UNI EN ISO 10619-1, A1

Vakuüm mótstöðufæri: Sambært royndum ILLAB018

Working and bursting pressure: according to ISO 1402

Bending radius at 23°C: According to UNI EN ISO 10619-1, A1

Vacuum resistance: According to test method ILLAB018



JAMAICA HD

JAMAICA HD

Flatliggjandi slanga úr NBR gummi, við polyester styrkingi. Mótstöðufær mótvegis trýsti frá vætu og oljum.

Flexible layflat NBR hose with polyester yarn reinforcement, resistant to elongation, for pressurized delivery of liquids and oils.



| Ø NOMINAL Ø NOMINAL | INNARI DIAMETUR Ø I.D. | ARBEIÐSTRÝST WORKING PRESSURE | BRESTIPUNKT BURSTING PRESS. | TOTAL TJÚKT TOTAL THICKNESS | VEKTMETUR WEIGHT METER | BROTSTYRKI TENSILE BREAKING LOAD |
|------------------------|---------------------------|----------------------------------|--------------------------------|--------------------------------|---------------------------|-------------------------------------|
| mm | mm | bar | bar | mm | g/m | kg |
| 20 | 20 | 30 | 90 | min. 2,2 | 215 | 1200 |
| 22 | 22 | 30 | 90 | min. 2,2 | 230 | 1200 |
| 25 | 25 | 30 | 90 | min. 2,1 | 245 | 1350 |
| 27 | 27 | 30 | 90 | min. 2,1 | 260 | 1350 |
| 32 | 32 | 27 | 80 | min. 2,0 | 310 | 1900 |
| 38 | 38 | 21 | 62 | min. 2,1 | 375 | 2200 |
| 42 | 42 | 21 | 62 | min. 2,1 | 395 | 2400 |
| 45 | 45 | 21 | 62 | min. 2,1 | 395 | 3300 |
| 52 | 52 | 17 | 52 | min. 2,0 | 470 | 4300 |
| 55 | 55 | 17 | 52 | min. 2,0 | 470 | 4450 |
| 63 | 63 | 17 | 52 | min. 2,2 | 600 | 5100 |
| 70 | 70 | 17 | 50 | min. 2,2 | 650 | 6500 |
| 75 | 75 | 17 | 50 | min. 2,2 | 710 | 7000 |
| 78 | 78 | 17 | 50 | min. 2,2 | 710 | 7200 |
| 80 | 80 | 15 | 45 | min. 2,2 | 760 | 7600 |
| 90 | 90 | 15 | 45 | min. 2,3 | 930 | 9200 |
| 102 | 102 | 15 | 45 | min. 2,4 | 1000 | 10500 |
| 104 | 104 | 15 | 45 | min. 2,4 | 1080 | 10500 |
| 110 | 110 | 13 | 40 | min. 2,4 | 1100 | 11000 |
| 115 | 115 | 13 | 35 | min. 2,4 | 1180 | 11500 |
| 125 | 125 | 15 | 45 | min. 2,8 | 1450 | 14000 |
| 150 | 150 | 13 | 35 | min. 2,7 | 1700 | 16500 |
| 156 | 156 | 13 | 35 | min. 2,7 | 1700 | 16500 |
| 204 | 204 | 12 | 35 | min. 3,5 | 3000 | 20300 |
| 254 | 254 | 10 | 28 | min. 3,5 | 3500 | 24100 |
| 304 | 304 | 10 | 26 | min. 3,5 | 3700 | 30300 |

ASPIR PU/H

ASPIR PU/H

Spiralsúgvíslanga við bláum PVC spirali. Bleyt, liðilig og lætt at arbeiða við. Slangan er klár og glætt innvendiga.

Spiral hose with PVC-made spiral in blue. Soft, flexible and easy to handle. The hose is transparent and smooth inside.



| INNARI DIAMETUR INSIDE DIAMETER | UTTARI DIAMETUR OUTSIDE DIAMETER | GÓÐSTJÚKT TOTAL THICKNESS BETWEEN SPIRALS SI | VEKT WEIGHT | VINKULRADIUS BENDING RADIUS |
|------------------------------------|-------------------------------------|--|----------------|--------------------------------|
| mm | mm | mm | kg/m | mm |
| 76 | 88 | 1 | 1,05 | 220 |
| 90 | 103 | 1,15 | 1,26 | 225 |
| 102 | 115 | 1,15 | 1,45 | 250 |
| 110 | 123 | 1,15 | 1,6 | 270 |
| 127 | 141 | 1,2 | 1,8 | 320 |
| 152 | 167 | 1,2 | 2,5 | 380 |
| 160 | 176 | 1,2 | 2,65 | 400 |
| 203 | 220 | 1,2 | 3,5 | 500 |
| 254 | 274 | 1,4 | 5,1 | 650 |
| 305 | 329 | 1,5 | 6,45 | 750 |

FLEXFAB KØLIVATNSSLANGA

FLEXFAB COOLING WATER HOSE

Kølivatnsslanga úr silikon, við innbygdum nylon. Verður brúkt til kølivatn og hitaanlegg. Tolir úr -54 °C upp til 177 °C og 7 bar trúst. KJ hefur úr 8mm upp til 25mm á goymslu.

Cooling water hose made out of silicone, with built-in nylon. Is used in cooling water and heat exchangers. Can manage from -54 °C up to 177 °C and up to 7 bar pressure. KJ keeps from 8mm up to 25mm on stock.



| | |
|---------------------------------|--|
| Litur Color | Blátt / Blue |
| Slangutypa Hose type | 1-ply |
| Arbeiðsrúst Working pressure | 7 bar |
| Trúst hámark Max pressure | 20,7 bar |
| Hitið Temperature | -54°C + 177°C |
| Tilfar Material | Syntetískt silikongummi (Q) / Synthetical silicone rubber |
| Standard Standard | SAE J20 R3 Class A |



ASPIROIL

ASPIROIL

Aspiroil oljusúgvi-returslanga við innbygðum stálspirali. Kann nýtast til blýfrítt, olju, diesel, feitt, smyrjiljlu og vatn. Innara lagið er úr NBR og uttan lagið er úr kloropren gummi (CR), ið er mótstöðuført ímóti olju- og hitaávirkan. Tolir úr -30 °C upp til 120 °C og 10 bar trúst. KJ veitur úr 3/4" til 3" av hesi slangu.

Aspiroil oil-suction hose with built-in steel spiral. Can be used for petroleum, oil, diesel, fats, lubricants and water. The inner layer is made out of NBR and the outer layer chloropren rubber (CR), which makes it resistant when exposed to oil and heat. Can withstand -30 °C up to 120 °C with 10 bar pressure. KJ keeps from 3/4" up to 3" sizes of this hose on stock.



| | |
|---|---|
| Tilfar innan Material inside | 120°C (vatn) 248 °F (Water), 120 °C (Water) |
| Tilfar uttan Material outside | 120°C (vatn) 248 °F (Water), 120 °C (Water) |
| Hiti Temperature | Syntetiskt gummi Synthetic Rubber |
| Arbeiðstrúst Working pressure | Dupultflættaður veitur 2 Braids of High Tensile Wire |
| Hámarkstrúst Max temperature | Hátrúst vatnreinsarir High Pressure Water Cleaners |

MULTI OIL

MULTI OIL

Hendan slætta og halðbara slangan úr NBR/PVC, kann nýtast til olju, diesel, biodiesel upp til 20%, blýfrítt og til onnur líknandi evni. Kann nýtast til ozon. Tolir úr -25 °C upp til 80 °C og 20 bar trúst. KJ hevur úr 6mm upp til 25mm á goymslu.

This smooth yet tough hose is made out of NBR/PVC. It can be used for oil, diesel, biodiesel up to 20%, petroleum and other chemicals alike. It can be used for ozon as well. Can withstand from -25 °C up to 80 °C and 20 bar pressure. KJ holds sizes 6mm up to 25mm on stock.



| | |
|--|---|
| Nýtsluøki Area of use | Luft, Biodiesel 20% B20, Diesel, Bensin, Bensin E15, Feitt, Olju, Vatn / Air, Biodiesel 20% B20, Diesel, Gasoline, Gasoline E15, Grease, Oil, Water |
| Litur Color | Svart / Black |
| Slangustødd Hose size | 6mm - 25mm |
| Góðs Material | NBR, PVC |
| Brestipunkt Pressure burst min. | 60 bar |
| Max trúst Pressure max. | 20 bar |
| Mesta hitastig Temperature max | +80 c |
| Minsta hitastig Temperature min. | -25 c |

SPULISLANGA 20BAR

WATERHOSE 20BAR

Sera haldbar og sterk slanga, til loft og vatn. Mótstöðuför ímóti stoyti og óslöttum flatum. Verður nýtt sum spulislanga til sjóidnaðin, umframt á landi. Slangan er styrkt við flættaðum polyestertráði. Longdir á rullum eru 40 metrar. Tolir úr -30 °C upp til 80 °C og 20 bar trúst.

Especially tough and durable hose for pneumatics and water. Resistant to impact and rough surfaces. Is used as a water hose for action on sea and on land. The hose is reinforced with braided polyester thread. Length of rolls is 40 meters. Can withstand from -30 °C and up to 80 °C and 20 bar pressure.



| INNARI DIAMETUR INSIDE DIAMETER | UTTARI DIAMETUR OUTSIDE DIAMETER | ARBEIDSTRÝST WORKING PRESSURE | BRESTIPUNKT BURSTING PRESS | VINKULRADIUS BENDING RADIUS | VEKT WEIGHT |
|------------------------------------|-------------------------------------|----------------------------------|-------------------------------|--------------------------------|----------------|
| mm | mm | bar | bar | mm | g/m |
| 13,0 | 22,6 | 20 | 64 | 120 | 500 |
| 16,0 | 26,0 | 20 | 64 | 150 | 600 |
| 19,0 | 29,4 | 20 | 64 | 180 | 670 |
| 25,0 | 36,2 | 20 | 64 | 250 | 930 |
| 32,0 | 45,6 | 20 | 64 | 320 | 1,3 |
| 38,0 | 51,6 | 20 | 64 | 350 | 1,49 |
| 45,0 | 59,4 | 20 | 64 | 450 | 1,95 |
| 51,0 | 65,4 | 20 | 64 | 500 | 2,18 |
| 63,0 | 77,0 | 20 | 64 | 600 | 2,61 |
| 76,0 | 91,6 | 20 | 64 | 900 | 3,1 |
| 90,0 | 106,0 | 20 | 64 | 1.05 | 4,7 |
| 102,0 | 118,0 | 20 | 64 | 1.15 | 5,19 |

SPULISLANGA 10BAR

WATERHOSE 10BAR

Svört, slött, gummisspulislanga, við tekstil armering. Ein slanga til fleiri slög av ídnaðarnýtslu; td. til sjó- og alivinnu. Arbeidstrústi er 10bar, fáast í 40 og 61 mtr rullum

Black, smooth, fabric-reinforced rubber water hose with strong reinforcement. A versatile hose suitable for various industrial applications, such as construction, marine, and aquaculture industries.



| INNARI DIAMETUR INSIDE DIAMETER | UTTARI DIAMETUR OUTSIDE DIAMETER | ARBEIDSTRÝST WORKING PRESSURE | BRESTIPUNKT BURSTING PRESS | VINKULRADIUS BENDING RADIUS | VEKT WEIGHT |
|------------------------------------|-------------------------------------|----------------------------------|-------------------------------|--------------------------------|----------------|
| mm | mm | bar | bar | mm | g/m |
| 32 | 41 | 10 | 30 | 320 | 695 |
| 38 | 47 | 10 | 30 | 380 | 810 |
| 50,8 | 61 | 10 | 30 | 508 | 1190 |
| 63,5 | 73 | 10 | 30 | 635 | 1365 |
| 76,2 | 86 | 10 | 30 | 762 | 1690 |
| 101,6 | 113 | 10 | 30 | 1016 | 2560 |



SUPERJET HÁTRÝSTS SPULISLANGA

SUPERJET HIGH-PRESSURE WATER HOSE

Superjet hátrýstsspulislanga frá Parker við tveytáttaðum stálveiri, er serliga gjörd til hátrýsts vatnreinsarir. Kann nýtast til konstant vatn við upp til 120 °C og klárar trýst upp til 400 bar.

Superjet high pressure water hose from Parker, braided with double steel wires. Made especially for high pressure water washers. Can be used with constant water up to 120 °C with a pressure up to 400 bar.



| | |
|--|---|
| Hámark fyri hitastig undir arbeiði Maximum Operating Temperature | 120°C (vatn) 248 °F (Water), 120 °C (Water) |
| Hámark fyri hitastig undir arbeiði Maximum Operating Temperature | 120°C (vatn) 248 °F (Water), 120 °C (Water) |
| Góðs, innara síða Hose Inner Tube Material | Syntetískt gummi Synthetic Rubber |
| Styrkigóðs á slangu Hose Reinforcement Material | Dupultflættaður veirur 2 Braids of High Tensile Wire |
| Nýtsla Application | Hátrýsts vatnreinsarir High Pressure Water Cleaners |
| Slanguverja Hose Cover Type | Blátt, syntetískt gummi Blue synthetic rubber |
| Max arbeiðstrýst Maximum Operating Pressure | 40 MPa, 5800 psi, 400 bar 40 MPa, 5800 psi, 400 bar |

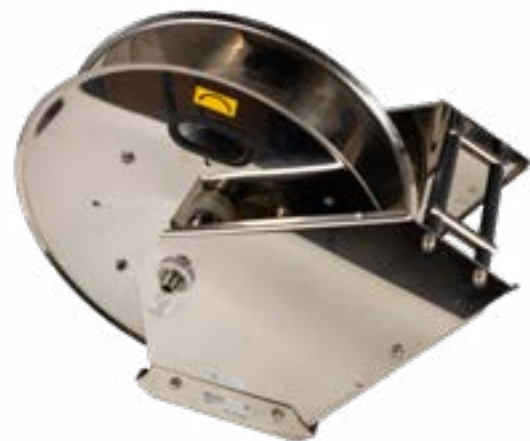


RUSTFRÍ HÁTRÝST- SLANGUTRUMLA

HIGH-PRESSURE HOSE REEL

Rustfrí AISI316 hátrýst slangutrumla. Auto X2 - 350bar, 40 mtr slanga 3/8". Trumlan kann monterast á vegg. Tilslutningur er 1/2" BSP. Vektin er 28kg uttan slangu.

Stainless steel AISI 316 high-pressure hose reel. Auto X2 - 350 bar, 40 m hose, 3/8". The reel can be wall-mounted. Connection is 1/2" BSP. Weight is 28 kg without hose.



AQUAFLEX

AQUAFLEX

Aquaflex HD vakumslanga. Slangan verður veitt við innbyggðum/vulkaniseraðum PN10 flansa í hvörjum enda. Slangan verður veitt við trýkantsprofili úr stáli, ið er innbyggdur í slanguni. Flansarnir eru í rustfríum stáli AISI304. KJ veitir alt úr 10" upp í 24" av hesi slangu og verður nýtt til fiskaflutning.

Aquaflex HD vacuum hose. The hose is delivered with built-in vulcanized PN10 flange in each end. The hose is also supplied with built-in triangled steel profile. The flanges are in stainless AISI304 steel. KJ offers from 10" and up to 24" sizes of this hose and is used for fish transportation.



| INNARI DIAMETUR INSIDE DIAMETER | UTTARI DIAMETUR OUTSIDE DIAMETER | LONGD LENGTH | BRESTIPUNKT BURSTING PRESS |
|------------------------------------|-------------------------------------|-----------------|-------------------------------|
| mm | inch | m | kg |
| 254 | 10 | 10 | 214 |
| 254 | 10 | 12 | 250 |
| 305 | 12 | 6 | 180 |
| 305 | 12 | 10 | 280 |
| 305 | 12 | 12 | 330 |
| 355 | 14 | 6 | 236 |
| 355 | 14 | 10 | 367 |
| 355 | 14 | 12 | 434 |
| 406 | 16 | 6 | 285 |
| 406 | 16 | 10 | 445 |
| 406 | 16 | 12 | 525 |
| 457 | 18 | 10 | 544 |
| 457 | 18 | 12 | 640 |
| 508 | 20 | 10 | 670 |
| 508 | 20 | 12 | 831 |
| 600 | 24 | 10 | 920 |
| 600 | 24 | 12 | 1080 |

FÓÐURSLANGA

ANTISTATIC FISH FEEDING PIPE

Hendan anti-statiska fódurslangan er framleidd við sergjørdari tøkni. Slangan dálkar ikki og kann endurnýttast. Hon er trygg at nýta bæði hjá fólki og fiski. Hon er eyðkend fyri at vera roynd endurtakandi ferðir fyri at tryggja góðskuna.

This antistatic fish feeding pipe is a long service-life hose with unique technology. The hose does not pollute and is recyclable. Safe for humans and fish and has qualitative value, since it is being continuously tried and tested.

| STØDD DIMENSION | SDR SDR | LONGD LENGTH |
|--------------------|---------------|-----------------|
| mm | SDR | m |
| 90 | 11, 13,6 & 17 | 350 |
| 63 | 11, 13,6 & 17 | 350 |





RAGNO ACQUA

RAGNO ACQUA

PVC slanga úr styrktum polyestertráði og millumliggjandi PU límlagi, so slangan gerst mótstöðufór ímóti trýsti. Hendan slangan verður nýtt til fiskaframleiðslu. Hon tolar úr -5 °C upp í 60 °C og arbeiðstrýst upp til 20 bar.

PVC hose with polyester yarn reinforcement and intermediate PU adhesive layer for delivery of food liquids under pressure. This hose is a perfect solutions for fish factories. Temperature range of the hose is -5 °C up to 60 °C and working pressure up to 20 bar.



| INNARI DIAMETUR Ø NOMINAL | INNARI DIAMETUR Ø NOMINAL | INNARI DIAMETUR Ø NOMINAL | UTTARI DIAMETUR Ø O.D. | ARBEIÐSTRÝST Á 23°C WORKING PRESSURE AT 23°C | ARBEIÐSTRÝST Á 40°C WORKING PRESSURE AT 40°C | ARBEIÐSTRÝST Á 60°C WORKING PRESSURE AT 60°C | BRESTIPUNKT BURSTING PRESS | TOTAL TJÚKT TOTAL THICKNESS |
|------------------------------|------------------------------|------------------------------|---------------------------|---|---|---|-------------------------------|--------------------------------|
| mm | inch | mm | mm | bar | bar | bar | bar | m |
| 4 | | 4 | 10 | 20 | 16 | 12 | 60 | 3 |
| 5 | 3/16 | 5 | 11 | 20 | 16 | 12 | 60 | 3 |
| 6 | 1/4 | 6 | 11 | 20 | 16 | 12 | 60 | 2,5 |
| 6 | 1/4 | 6 | 12 | 20 | 16 | 12 | 60 | 3 |
| 6 | 1/4 | 6 | 14 | 20 | 16 | 12 | 60 | 4 |
| 7 | | 7 | 13 | 20 | 16 | 12 | 60 | 3 |
| 8 | 5/16 | 8 | 13 | 18 | 13 | 9 | 54 | 2,5 |
| 8 | 5/16 | 8 | 14 | 18 | 13 | 9 | 54 | 3 |
| 9 | | 9 | 15 | 18 | 13 | 9 | 54 | 3 |
| 10 | 3/8 | 10 | 15 | 18 | 13 | 9 | 54 | 2,5 |
| 10 | 3/8 | 10 | 16 | 18 | 13 | 9 | 54 | 3 |
| 12 | | 12 | 17 | 12 | 9 | 6 | 36 | 2,5 |
| 12 | | 12 | 18 | 12 | 9 | 6 | 36 | 3 |
| 13 | 1/2 | 13 | 18 | 12 | 9 | 6 | 36 | 2,5 |
| 13 | 1/2 | 13 | 19 | 12 | 9 | 6 | 36 | 3 |
| 15 | | 15 | 21 | 10 | 7 | 4 | 30 | 3 |
| 15 | | 15 | 23 | 10 | 7 | 4 | 30 | 4 |
| 16 | 5/8 | 16 | 21 | 10 | 7 | 4 | 30 | 2,5 |
| 16 | 5/8 | 16 | 22 | 10 | 7 | 4 | 30 | 3 |
| 19 | 3/4 | 19 | 25 | 10 | 7 | 4 | 30 | 3 |
| 19 | 3/4 | 19 | 26 | 10 | 7 | 4 | 30 | 3,5 |
| 22 | | 22 | 30 | 8 | 5 | 3 | 24 | 4 |
| 25 | 1 | 25 | 32 | 8 | 5 | 3 | 24 | 3,5 |
| 25 | 1 | 25 | 33 | 8 | 5 | 3 | 24 | 4 |
| 30 | | 30 | 38 | 8 | 5 | 3 | 24 | 4 |
| 32 | 1 1/4 | 32 | 42 | 8 | 4 | 2 | 24 | 5 |
| 35 | | 35 | 45 | 8 | 4 | 2 | 24 | 5 |
| 38 | 1 1/2 | 38 | 48 | 8 | 4 | 2 | 24 | 5 |
| 40 | | 40 | 50 | 8 | 4 | 2 | 24 | 5 |
| 50 | 2 | 50 | 62 | 8 | 4 | 2 | 24 | 6 |

RAGNO N 20 BAR (LIFT-UP)

RAGNO N 20 BAR (LIFT-UP)

PVC slanga við styrktum polyestertráði og PU límlagi. Verður brúkt til lift-up í alivinnuni.

PVC hose with polyester yarn reinforcement and PU adhesive intermediate layer used for lift-up in the land-based aquaculture industry.



| INNARI DIAMETUR Ø NOMINAL | INNARI DIAMETUR Ø NOMINAL | INNARI DIAMETUR Ø NOMINAL | UTTARI DIAMETUR Ø O.D. | ARBEIDSTRÝST Á 23°C WORKING PRESSURE AT 23°C | ARBEIDSTRÝST Á 40°C WORKING PRESSURE AT 40°C | ARBEIDSTRÝST Á 60°C WORKING PRESSURE AT 60°C | VEKTMETUR WEIGHT METER | KVEYL LONGD COIL LENGTH |
|------------------------------|------------------------------|------------------------------|---------------------------|---|---|---|---------------------------|----------------------------|
| mm | inch | mm | mm | bar | bar | bar | g/m | m |
| 6 | | 6 | 12 | 20 | 16 | 12 | 115 | 100 |
| 8 | 5/16 | 8 | 13 | 20 | 16 | 12 | 110 | 100 |
| 8 | 5/16 | 8 | 13,8 | 20 | 16 | 12 | 130 | 100 |
| 10 | 3/8 | 10 | 15 | 20 | 16 | 12 | 120 | 100 |
| 10 | 3/8 | 10 | 16 | 20 | 16 | 12 | 160 | 100 |
| 13 | 1/2 | 13 | 19 | 20 | 16 | 12 | 180 | 100 |
| 16 | 5/8 | 16 | 23 | 20 | 16 | 12 | 300 | 100 |
| 19 | 3/4 | 19 | 26 | 20 | 16 | 12 | 350 | 100 |
| 25 | 1 | 25 | 34 | 20 | 16 | 12 | 530 | 50 |

IQ LIFT-UP SLANGA

IQ LIFT-UP HOSE

Lætt og mótstöðufær súgvislanga til lift-up, ið verður brúkt í alivinnuni. Av svörtum EPDM og við polyamid spiralar.

Light-weight and resistant suction hose for lift-up, which is used in the aquaculture industry. Made of rubber coated fabric with black EPDM and polyamide EPDM rubber coated spiral.



| INNARI DIAMETUR INSIDE DIAMETER | INNARI DIAMETUR INSIDE DIAMETER | VEKT WEIGHT | VINKULRADIUS BENDING RADIUS | KVEYL LONGD COIL LENGTH |
|------------------------------------|------------------------------------|----------------|--------------------------------|----------------------------|
| mm | inch | kg/m | mm | m |
| 51 | 2 | 0,54 | 70 | 10/20/40 |
| 63.5 | 2 1/2 | 0,58 | 80 | 10/20/40 |
| 76 | 3 | 0,83 | 95 | 10/20/40 |
| 80 | 3 5/32 | 0,87 | 100 | 10/20/40 |
| 90 | 3 35/64 | 0,93 | 105 | 10/20/40 |
| 102 | 4 | 0,98 | 110 | 10/20/40 |
| 127 | 5 | 1,3 | 130 | 10/20/40 |
| 152 | 6 | 1,58 | 140 | 10/20/40 |
| 203 | 8 | 2,08 | 185 | 10/20 |





INDUSTRI KOBLINGAR

COUPLINGS



CAMLOCK KOBLINGAR

CAMLOCK COUPLINGS

KJ hefur eitt stórt úrval av Camlock koblingum á goymslu, bæði í aluminium og rustfríður. KJ veitur úr 1/2" upp til 10". Camlock koblingin er þúra slött innan tá hon verður kobrað saman, sum ger hessa kobling sera góða til fiskaflutning. Í koblinginni liggur ein EPDM pakningur. Hendan koblingin er sera slitsterk og tött.

KJ has a wide range of camlock couplings in aluminium and stainless steel on stock. KJ can offer these from sizes 1/2" up to 10". The camlock coupling has a great advantage in its smooth inside, which makes it ideal for fish transportation. In the coupling is a EPDM gasket. This coupling is exceptionally strong and closely sealed.

| STÖDD / GEVIND DIMENSION / THREAD |  LUTUR A PART A |  LUTUR B PART B |  LUTUR C PART C |  LUTUR D PART D |  LUTUR E PART E |  LUTUR DC PART DC |  LUTUR DP PART DP |
|--------------------------------------|--|--|--|--|--|--|--|
| | Hann við innv. gevind Male with internal thread | Hon við útv. gevind Female with external thread | Hon við slangustussi Female with hose nipple | Hon við innv. gevind Female with internal thread | Hann við slangustussi Male with hose nipple | Proppur til hann End cap for male | Proppur til hon End cap for female |
| inch | # | # | # | # | # | # | # |
| 1/2" BSP | CAM70010 | CAM70180 | CAM72010 | CAM73010 | CAM74010 | CAM76010 | CAM77010 |
| 3/4" BSP | CAM70020 | CAM70190 | CAM72020 | CAM73020 | CAM74020 | CAM76020 | CAM77020 |
| 1" BSP | CAM70025 | CAM70200 | CAM72025 | CAM73025 | CAM74025 | CAM76030 | CAM77030 |
| 1 1/4" BSP | CAM70030 | CAM70210 | CAM72030 | CAM73030 | CAM74030 | CAM76040 | CAM77040 |
| 1 1/2" BSP | CAM70040 | CAM70220 | CAM72040 | CAM73040 | CAM74040 | CAM76050 | CAM77050 |
| 2" BSP | CAM70050 | CAM70230 | CAM72050 | CAM73050 | CAM74050 | CAM76075 | CAM77075 |
| 2 1/2" BSP | CAM70060 | CAM70240 | CAM72060 | CAM73060 | CAM74060 | CAM7682 | CAM77082 |
| 3" BSP | CAM70075 | CAM70250 | CAM72075 | CAM73075 | CAM74075 | CAM76076 | CAM77076 |
| 4" BSP | CAM70100 | CAM70260 | CAM72100 | CAM73100 | CAM74100 | CAM76077 | CAM77077 |
| 5" BSP | CAM70125 | CAM70270 | CAM72125 | CAM73125 | CAM74125 | CAM76078 | CAM77078 |
| 6" BSP | CAM70150 | CAM70280 | CAM72150 | CAN73150 | CAM74150 | CAM76079 | CAM77079 |
| 8" BSP | CAM70160 | CAM70290 | CAM72200 | CAM73160 | CAN74200 | CAM76080 | CAM77080 |
| 10" BSP | CAM70170 | CAM70300 | CAM72210 | CAM73170 | CAM74210 | CAM76081 | CAM77081 |



FISKAKOBLING

FISH COUPLING

Fiskakobling AISI316 - Gjörð til flutning av livandi fiski. Koblingin er úr AISI316 og er þúra gløtt innvendiga, so fiskur ikki tekur skaða. Klógvarnir eru úr rustfríðum stáli AISI316 - hesar eru á goymslu úr 8" upp til 16". Møguleiki er eisini at fáa koblingina við flansum.

Fish coupling AISI 316 – designed for the transport of live fish. The coupling is made of AISI 316 stainless steel and has a completely smooth inner surface to prevent damage to the fish. The claws are also made of AISI 316 stainless steel. Available from stock in sizes from 8" up to 16". Optionally available with flanges.





A large, close-up photograph of a stack of dark blue hoses, showing the ribbed texture of the hose ends. The hoses are stacked in a way that creates a sense of depth and repetition, filling the left and center portions of the page.

FISKASLANGUR OG FITTINGS

FISH PUMP HOSES AND FITTINGS



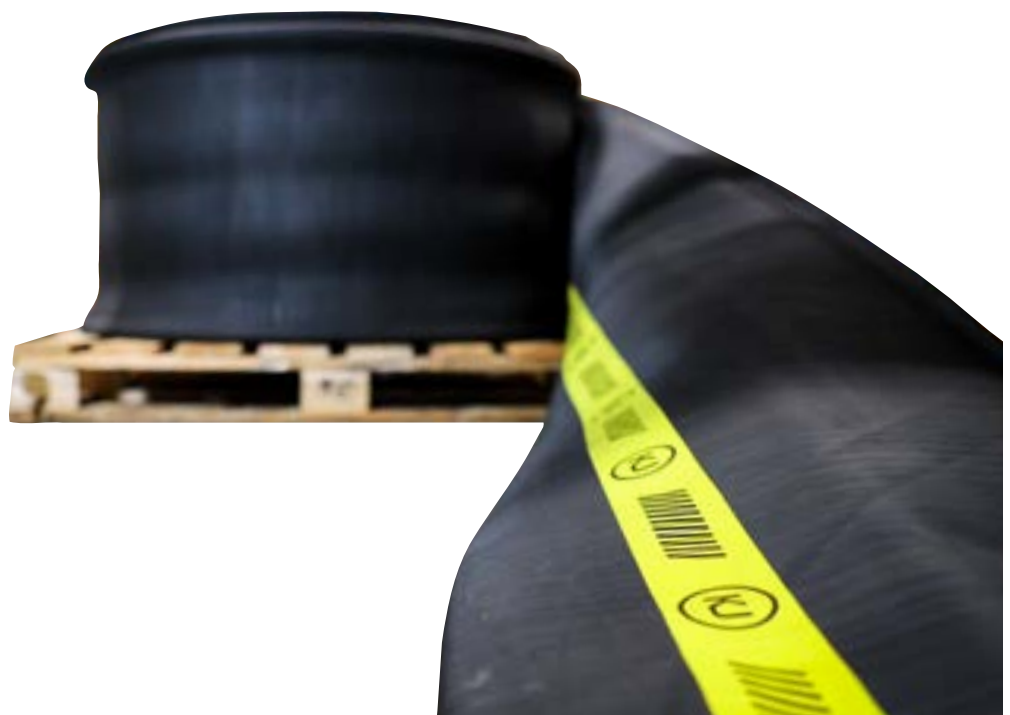
FISKAPUMPUSLANGA

FISH PUMP HOSES

Fiskapumpuslanga úr 4" upp til 20", har fiskur verður pumpaður gjøgnum. Framleidd úr polymer, ið er av natúrligum gummi. Sera mótstøðufør ímóti sliti og skurðsli, skitnum vatni, organiskum oljum og petroleumsrestum.

Large diameter flat hose, through which fish is pumped from the underwater pump located in the mes, to the ship's holds. Made out of NR based polymer (Natural Rubber). Excellent for resistance to abrasion and cut wear, brackish water, organic oils and petroleum derivatives.

| INNARI DIAMETUR Ø NOMINAL | | TJÚKT THICKNESS | ARBEIÐSTRÝST WORK PRESSURE | | LONGD LENGTH |
|------------------------------|------|--------------------|-------------------------------|-----|-----------------|
| mm | inch | mm | psi | bar | m |
| 102 | 4" | 3 | 100 | 6,8 | 40 |
| 127 | 5" | 3 | 100 | 6,8 | 40 |
| 152 | 6" | 3,5 | 100 | 6,8 | 20 - 160 |
| 203 | 8" | 3,5 | 85 | 5,9 | 20 - 160 |
| 203 | 8" | 4,5 | 85 | 5,9 | 20 - 160 |
| 254 | 10" | 3,5 | 70 | 4,8 | 20 - 160 |
| 254 | 10" | 4,5 | 70 | 4,8 | 20 - 160 |
| 305 | 12" | 5,5 | 55 | 3,8 | 20 - 160 |
| 305 | 12" | 12 | 55 | 3,8 | 5 - 20 |
| 356 | 14" | 12 | 45 | 3 | 5 - 20 |
| 356 | 14" | 5,5 | 45 | 3 | 20 - 160 |
| 406 | 16" | 5,5 | 45 | 3 | 20 - 160 |
| 406 | 16" | 6 | 45 | 3 | 20 - 160 |
| 457 | 18" | 5,5 | 35 | 2,4 | 20 - 160 |
| 457 | 18" | 6 | 35 | 2,4 | 20 - 160 |
| 508 | 20" | 5,5 | 35 | 2,4 | 20 - 160 |
| 508 | 20" | 6 | 35 | 2,4 | 20 - 160 |



FISKASLANGUFITTINGS

FISH HOSE FITTINGS

SLANGUSTUSSUR

HOSE CONNECTOR

SLANGUKLEMMI

HOSE CLAMP

SLANGUBEND

HOSE BEND

SNARKOBLING

QUICK RELEASE COUPLING

SLANGUREDUKTÍÓN

HOSE REDUCTION

KJ hefur breitt úrval av fittings til fiskapumpuslangur, úr 12" upp til 20", á goymslu. Slanguklemmur eru á goymslu í bæði aluminium og rustfríum stáli. Vit hava bæði snarkobling við og utan pakning.

KJ has a wide range of fittings for fish pump hoses, from 12" up to 20" on stock. Hose clamps are in stock, in both steel and stainless steel. Quick release couplings are on stock, with or without seals.





SVØVIL

HOSE SWIVEL

KJ hefur aluminium og rustfríar svøvlar á goymslu. Rustfrú svøvlarnir eru við rullulegum og kunnu teir smyrjast.

KJ keeps both swivel in steel and stainless steel on stock. The stainless swivels are with bearings and can be lubricated.



SUCTION BELL

SUCTION BELL

KJ hefur suction bellir á goymslu, til Rapp og Seaquest fiskapumpur í 18" og 20"

KJ keeps suction bells in stock for Rapp and Seaquest fish pumps in sizes 18" and 20".

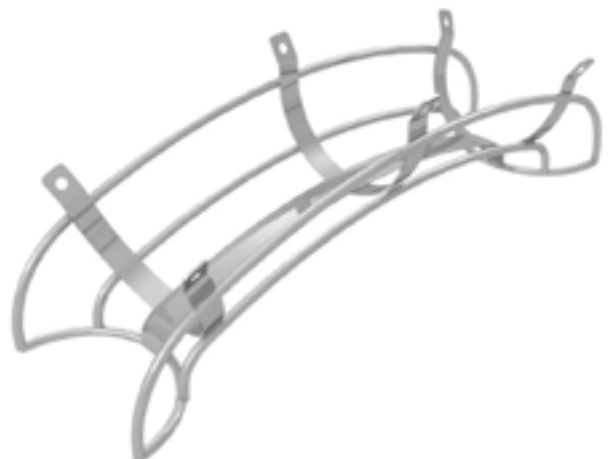


SLANGUVØGGA, RUSTFRÍ

HOSE HOLDER, STAINLESS

KJ veitur rustfríar slanguvøggur úr 4" upp í 20". Vøggan er gjørd úr rustfríum rundstáli (AISI316) og hefur seks festishol. Kann nýtast til fiskaslangur og aðrar industri-slangur. Við hesum liggur slangan snøgt uppiá pláss, uttan vanda fyri skursli.

KJ delivers hose holders in stainless steel – from 4" up to 20". The hose holder is produced with stainless round steel (AISI316) and has six attaching holes. Can be used for fish hoses and other industry hoses alike. By using this, the hose is neatly put in place, with no risk of abrasion.





HYDRAULIKK- SLANGUR

HYDRAULIC HOSES



HYDRAULIKKSLANGA 462ST

HYDRAULIC HOSE 462ST

Hydraulikkslanga 462ST (Super Tough). Hesar 2-lag hydraulikkslangur eru framleiddar við útvendigari verju úr syntetiskum gummi, við sergjörðum polyethylene lagi. Hetta er sergjört til at tola sjógv og sól. Hesar slangur verða veittar við One-Piece fittings.

Hydraulic hose 462ST (Super Tough). These two-layered hydraulic hoses are produced with an outside cover made from synthetic rubber, with a special layer polyethylene. This is made to tolerate seawater and sunlight. These hoses are delivered with One-Piece fittings.



| STÖDD DIMENSION | ARBEIDSTRÝST WORKING PRESSURE |
|--|---|
| inch | bar/psi |
| 1/4" | 425bar / 6160psi |
| 3/8" | 350bar / 5075psi |
| 1/2" | 310bar / 4495psi |
| 3/4" | 280bar / 4060psi |
| 1" | 210bar / 3045psi |
| 1 1/4" | 172bar / 2495psi |
| Umslag á slangu Hose cover type | Super Tough |
| Spesifikatióinir Specifications | EN 857, Type 2SC, ISO 11237 |
| Útgáva av fittings Fittings series | 46 Series & Series 48 |
| Slangustyrking Hose reinforcement | Dupultlagaður veirur / 2 Braids of high tensile wire |
| Umslag (tilfar) Cover material | Syntetískt gummi við sermerktum polyethylen lagi / Synthetic rubber with a special polyethylene coating |
| Tilfar á innaru síðu Hose inner tube material | Nitril butadiene gummi (NBR) Nitrile butadiene rubber (NBR) |
| Max arbeiðshiti Maximum operating temperature | 120 °C |

HYDRAULIKKSLANGA 797ST

HYDRAULIC HOSE 797ST

Hydraulikkslanga 797ST (Super Tough). Hesar 4-lag hydraulikkslangur eru framleiddar við útvendigari verju úr syntetiskum gummi, við sergjörðum polyethylene lagi. Hetta er sergjört til at tola sjógv og sól. Hesar slangur verða veittar við One-Piece fittings.

Hydraulic hose 797ST (Super Tough). These four-layered hydraulic hoses are produced with an outside cover made from synthetic rubber, with a special layer polyethylene. This is made to tolerate seawater and sunlight. These hoses are delivered with One-Piece fittings.



| STÖDD DIMENSION | ARBEIDSTRÝST WORKING PRESSURE |
|--|--|
| inch | bar/psi |
| 1/4" | 425bar / 6160psi |
| 3/8" | 350bar / 5075psi |
| 1/2" | 310bar / 4495psi |
| 3/4" | 280bar / 4060psi |
| 1" | 210bar / 3045psi |
| 1 1/4" | 172bar / 2495psi |
| Umslag á slangu Hose cover type | Super Tough |
| Spesifikatióinir Specifications | ISO 18752 |
| Útgáva av fittings Fittings series | 77 Series |
| Slangustyrking Hose reinforcement | Fýra lög av veiri 4 spirals of steel wire |
| Umslag (tilfar) Cover material | Syntetískt gummi / Synthetic rubber abrasion resistant |
| Tilfar á innaru síðu Hose inner tube material | Syntetískt gummi / Proprietary synthetic rubber compound |
| Max arbeiðshiti Maximum operating temperature | 125 °C |

PARKER PTS (TRACKING SYSTEM)

PARKER PTS (TRACKING SYSTEM)

Parker PTS - PTS stendur fyri "Parker Tracking System". Sum teir einastu í Føroyum hevur KJ tracking system til allar hydraulikkslangur sum verða veittar. Allar hydraulikkslangur verða veittar við einum spjaldri, sum verður klistrað á slanguna. Við hesum kann kundin evt. skannað ella senda strikukoduna til KJ og kundin fær júst somu slangu aftur. Á hendan hátt sleppur kundi undan at avmonterað hana og takað hann inn til KJ. PTS kann eisini nýtast sum alarm, t.d um ein slanga skal skiftast aftaná 1/2 ár, kann kundin seta alarm á appini sum so sigur frá. Á spjaldrið kann KJ skriva hvat kundin ynskir, eitt nú KJ-nummar og staðseting av slanguni o.s.fr. Hetta er ein tænasta, sum KJ bjóðar sínum kundum.

Parker PTS - PTS stands for "Parker Tracking System". KJ is the only supplier in the Faroe Islands that has a tracking system for all delivered hydraulic hoses. All hydraulic hoses are supplied with a label. With this the customer can scan and/or send the bar code to KJ and get exactly the same hose back for a second order. In doing this, the customer does not have to dismount the hose and bring it back to KJ in order to get the exact same hose. PTS can also make an alarm when it is time to change the hose after half a year. This is done by using an app which signals when it is time to change it with a new hose. KJ can write whatever the customer wishes on the label - for example this can be the KJ-number of the hose, area of use etc. This service is offered to KJ's valued customers.





SHIELDMASTER

SHIELDMASTER

Shieldmaster 4000 - Tann vælkenda hydraulikkslangan til fiskapumpuna. Hesa slangu hefur KJ veitt í kilometurvís til pelagisku skipini gjøgnum árin. Sera slitsterk slanga, við PVC gummi útvendiga, sum ger at hon glíður væl eftir dekinum og lúnningini.

Shieldmaster 4000 - the famous hydraulic hose for the fish pump. KJ has delivered many kilometers of lengths of this hose for the pelagic vessels throughout the years. Exceptionally strong hose with PVC rubber on the outside, which makes it easy to work with.



| STØDD DIMENSION | ARBEIÐSTRÝST WORKING PRESSURE |
|---|---|
| inch | bar/psi |
| 1 1/4" | 276bar / 4000psi |
| 1 1/2" | 276bar / 4000psi |
| 2" | 276bar / 4000psi |
| Umslag á slangu Hose cover type | Komposit lag við framúr mótstøðuføri mótvegis skursli / Composite bi-layer structure with outstanding abrasion resistance |
| Slangustyrking Reinforcement | Fýra styrktir veirar / Four high tensile steel spirals |
| Max arbeiðshiti Maximum operating temperature | 125 °C |
| Góðkenning Type approvals | CU-TR |
| Tilfar á innaru síðu Hose inner tube material | Syntetiskt gummi, tólar olju / Oil resistant synthetic rubber |
| Lyklaeginleikar Key features | <ul style="list-style-type: none"> • ISO trýstsmát / Isobaric pressure rating • Tólar kaldastu umstøðurnar / FROST suitable for very cold environments • Framúr mótstøðuføri ímóti skursli og oson / Outstanding abrasion and ozone resistance |



RØR- OG SLANGUFITTINGS, HYDRAULIKKUR

PIPE AND HOSE FITTINGS, HYDRAULICS

ERMETO RØRFITTINGS

ERMETO FITTINGS

Okkara ermeto fittings vísa til DIN2352/DIN EN ISO 8434-1. Ermeto fittings fáast í karbonstáli og rustfríum stáli. L-serian er á goymslu úr 6mm upp til 42mm. S-serian er á goymslu úr 6mm upp til 38mm.

Our ermeto type (profile ring) fittings comply with DIN 2353/DIN EN ISO 8434-1. Bite type (profile ring) fittings are available in carbon steel and stainless steel. The L-series is on stock from 6mm up to 42. The S-series is on stock from 6mm up to 38mm.



JIC RØRFITTINGS

JIC FITTINGS

Okkara JIC 37° fittings vísa til SAEJ 514 (ISO 8434-2). Eisini veita vit spesial JIC 37° fittings – bæði við, og uttan o-ring. KJ hefur úr 7/16" upp til 1 7/8" á goymslu.

All our JIC 37° flare fittings comply with SAEJ 514 (ISO 8434-2). In addition to basic JIC 37° flare fittings, We also delivers special JIC 37° flare fittings – either with or without an O-ring. KJ has from 7/16" up to 1 7/8" on stock.



BSP RØRFITTINGS

BSP FITTINGS

Okkara BSP fittings við 60° konus kunnu fáast í karbon stáli og rustfríum stáli. KJ hefur frá 1/4" upp til 2" á goymslu.

Our BSP fittings with 60° cone are available in carbon steel or stainless steel. KJ has from 1/4" up to 2" on stock.



ORFS RØRFITTINGS

ORFS FITTINGS

Okkara ORFS fittings veita lekafría íbinding, eisini við hátrústi, vibratiónum og skjóttgangandi umhvørvi. KJ hefur frá 9/16" upp til 1 11/16" á goymslu.

O-Ring Face Seal fitting design provides leak-free connections in applications with high-pressure, vibration and impulse environments. KJ has from 9/16" up to 1 11/16" on stock.



SLANGUFITTINGS

HOSE FITTINGS

Vit bjóða eitt sera stórt úrval av One-Piece-slangufittings, frammléidd í Evropa. Øll eru sniðgivin til at fylgja skipanum við IFS slangum, soleiðis at góðska og avrik er í háseti. Vit hava stórt úrval á goymslu av ermeto, BSP, JIC, ORFS og SAE, í bæði stáli og rustfríum stáli.

We offer a wide range of One-Piece fittings manufactured in Europe, all designed as a match system with IFS hoses, assuring quality and performance.



HYDR.LYN-KOBLINGAR

HYDRAULICS QUICK-RELEASE COUPLINGS

KJ hefur eitt breitt úrval av hydrauliskum lynkoblingum, m.a. Tema, Flatface og Faster. Tær fáast í støddum frá 1/4" upp í 1 1/2", bæði í svartum og rustfríðum stáli. Harumframt hefur KJ eisini pakningar til koblingarnar á goymslu.

KJ offers a wide range of hydraulic quick couplings, including Tema, Flatface, and Faster. Available in sizes from 1/4" up to 1 1/2", in both black steel and stainless steel. KJ also keeps seals for the couplings in stock.



SVØVIL

SWIVEL JOINTS

SJ 10 útgávan av svøvlum (beinir). Eru framleiddir við tí fyri eyga, at verða settur millum slangufittings, soleiðis at slangan verður betri vard. Snúningsliðurin er gjørdur av einum ella tveimum røðum av radialum kúlum (ein røð upp til 1/2" íroknað). Pakningurin er úr nitrilgummi.

The series SJ 10 (straight) swivel joints are designed to be mounted between a hose assembly and a rigid component in order to allow and compensate occasional rotations, preventing hose damages. The swivel joint rotation is based on one or two rows of radial balls (one row up to size 1/2" included). Standard seals in nitril rubber.



| VØRUNUMMAR ARTICLE NUMBER | ARBEIÐSTRÝST MAX PRESSURE IN ROTATION | | MAX TRÝST STATIC MAX PRESSURE | |
|------------------------------|---|------|-------------------------------------|------|
| | bar | psi | bar | psi |
| # | | | | |
| 1004S | 200 | 2900 | 400 | 5800 |
| 1006S | 200 | 2900 | 400 | 5800 |
| 1008S | 150 | 2175 | 300 | 4350 |
| 1012S | 150 | 2175 | 300 | 4350 |
| 1016S | 100 | 1450 | 300 | 4350 |
| 1020S | 100 | 1450 | 300 | 4350 |
| 1024S | 80 | 1160 | 300 | 4350 |
| 1032S | 50 | 725 | 250 | 3625 |

SVØVIL 90°

SWIVEL JOINTS 90°

SJ 90 útgávan av svøvlum (vinkul). Eru framleiddir við tí fyri eyga, at verða settir millum slangufittings, soleiðis at slangan verður betri vard. Snúningsliðurin er gjørdur av einum ella tveimum røðum av radialum kúlum (ein røð upp til 1/2" íroknað). Pakningurin er úr nitrilgummi.

The series SJ 90 (angle) swivel joints are designed to be mounted between a hose assembly and a rigid component in order to allow and compensate occasional rotations, preventing hose damages. The swivel joint rotation is based on one or two rows of radial balls (one row up to size 1/2" included). Standard seals in nitril rubber.



| VØRUNUMMAR ARTICLE NUMBER | ARBEIÐSTRÝST MAX PRESSURE IN ROTATION | | MAX TRÝST STATIC MAX PRESSURE | |
|------------------------------|---|------|-------------------------------------|------|
| | bar | psi | bar | psi |
| # | | | | |
| 9004SJ | 200 | 2900 | 400 | 5800 |
| 9006SJ | 200 | 2900 | 400 | 5800 |
| 9008SJ | 150 | 2175 | 300 | 4350 |
| 9012SJ | 150 | 2175 | 300 | 4350 |
| 9016SJ | 100 | 1450 | 300 | 4350 |
| 9020SJ | 100 | 1450 | 300 | 4350 |
| 9024SJ | 80 | 1160 | 300 | 4350 |
| 9032SJ | 50 | 725 | 250 | 3625 |

The background of the entire page is a dark blue gradient. Overlaid on this is a semi-transparent image of several cylindrical filters and filter housings. One filter in the foreground has a perforated metal mesh. Another filter in the background has a pleated paper surface. The filters are arranged in a cluster, with some partially obscured by others. The text 'HIFI' and '61 fibers' are visible on one of the filter housings in the background.

FILTUR OG FILTURHÚSAR

FILTERS AND FILTER HOUSINGS



SEPAR FILTURHÚSI SWK2000/40/U DUPLEX

SEPAR FILTERHOUSING SWK2000/40/U DUPLEX

Dupultur filterhúsi til brennolju. Verður oftá nýttur sum forfilter til motorar. Verður eisini veitt við klárum glasi og avtapping. Hesin klárar 2400 litrar um tíman. Til hesar filterhúsar, fáast filturelement úr 10 micron upp til 60 micron. Max trúst er 4 bar. Hesir fáast eisini sum einkulthúsar (simplex).

Double filterhousing for fuel oil. Is often used a pre-filter for engines. Are supplied with a clear glass and draining option. These manage 2400 ltr/hr. For these filter housings are filter elements from 10 micron up to 60 micron available. Max pressure is 4 bar. These are also available in simplex.



SEPAR FILTURHÚSI SWK2000/18/U DUPLEX

SEPAR FILTERHOUSING SWK2000/18/U DUPLEX

Dupultur filterhúsi til brennolju. Verður oftá nýttur sum forfilter til motorar. Verður eisini veitt við klárum glasi og avtapping. Hesin klárar 1080 litrar um tíman. Til hesar filterhúsar, fáast filturelement úr 10 micron upp til 60 micron. Max trúst er 7 bar. Hesir fáast eisini sum einkulthúsar (simplex).

Double filterhousing for fuel oil. Is often used a pre-filter for engines. Are supplied with a clear glass and draining option. These manage 1080 ltr/hr. For these filter housings are filter elements from 10 micron up to 60 micron available. Max pressure is 7 bar. These are also available in simplex.



RACOR FILTURHÚSAR

RACOR FILTERHOUSING

Racor Fuel Filter Water Separator Turbine serian er eitt trúdeild filturskipan, sum gevur maksimala verju av lutum í diesel-motorum. Tað beinur burtur skaðilig evni frá brennievni, so sum vatn, silikon, sand, skitt og rust. Hesir filterhúsar fáast við elementum við 2 micron, 10 micron og 30 micron. KJ veitur Racor filterhúsar í bæði einkultum og dupultum húsum.

The Racor Fuel Filter Water Separator Turbine Series is a three-stage filtration system that provides maximum protection of diesel engine components by effectively removing contaminants from fuel, such as water, silica, sand, dirt, and rust. These Racour filter housings are available in 2 micron, 10 micron and 30 micron. KJ can supply these in both single and double housings.



VATNFILTURHÚSAR

FILTER HOUSINGS (WATER)

Styrktir polypropylen húsar hava sterkt kemiskt mótstøðuføri. Verða millum annað brúktir til reinsing av vatn/veskum umborð á skipum. Fáast í 10" og 20" støddum við klárum, umframt kámum sniði. KJ hevur stórt úrval av fiturelementum til hesar vatnfilterhúsar.

Reinforced polypropylene housings have excellent chemical resistance. Are used for fresh water production onboard vessels. Available in 10" and 20" sizes with clear and opaque sump options. KJ has a wide range of filter elements for these filter housings.



FILTURHÚSAR

FILTER HOUSINGS

KJ hevur filterhúsar á goymslu, til smyrji- og brenniolju, umframt hydraulikk. Teir fáast rørmonteraðir og tanga-monteraðir.

KJ keeps filter housings for lube- and fuel oil, as well as hydraulics on stock. Can be mounted on pipes as well as on tanks.





FILTUR

FILTERS

KJ hevur størsta úrval av filtrum í Føroyum, har omanfyri 1100 ymisk filter eru á goymslu. Umframt hetta, umboðar KJ nakrar av størstu filterframleiðarunum í heiminum. Hesir eru millum annað Donaldson, HIFI og Parker.

KJ has the biggest range of filters on stock in the country, where more than 1100 different filters are on stock. KJ also represents some of the world's largest producers of filters. These are for example Donaldson, HIFI and Parker.



BOLL & KIRCH FILTUR

BOLL & KIRCH FILTER

KJ bjóðar filtur og deilir frá Boll & Kirch. Filtrini eru dygdargóð og væl umtókt, og verða einamest nýtt innan fiskivinnuna. Vit veita filturstavar úr polyester og stáli.

KJ offers filters and spare parts from Boll & Kirch. The filters are high-end quality and much sought after. They mostly used within the fishing industry. We offer filter rods in polyester and steel.



FILTURMÁTTA PST290

FILTER MATS

Filturmáttir til turbinur og annað. Fínleiki G3 og G4, breidd upp til 2 mtr og longd upp til 20 mtr. Tjúktin fæst í 10 mm og 20 mm.

Filter mats for tubines etc. Fineness G3 and G4, width up width up to 2 mtr and length up to 20 mtr. Thickness is available in 10 mm and 20mm.



CINTROPUR TRIO-FILTURHÚSI

CINTROPUR TRIO FILTER HOUSING

Cintropur trio-filturhúsi verður nýtt til reinsan av drekkivatni við kolfiltrum og UV-ljósi. Tað verður m.a. brúkt um borð á skipum til at fáa reint drekkivatn úr tanga.

The Cintropur Trio filter housing is used for purification of drinking water using carbon filtration and UV light. It is commonly used onboard vessels to produce clean water from tank storage.



CINTROPUR NW FILTURHÚSI

CINTROPUR NW

Cintropur NW-filturhúsar eru sterkir og álítandi, mekaniskir vatnfilturhúsar til vinnu. Teir filtrera smáar partiklar, hava stórt filtreringsøki og sentrifugala forfiltrering, og brúka skiftisfiltrum í ymiskum grovleikum. Húsin eru úr glasfipurstyrktum polypropylen og tolr upp til 10–16 bar og 50°C.

Cintropur NW filter housings are robust and reliable mechanical water filters for domestic and industrial use. They filter small particles, feature a large filtration surface and centrifugal pre-filtration, and use replaceable filters in various micron ratings. The housings are made of glass fiber-reinforced polypropylene and withstand pressures of 10–16 bar and temperatures up to 50°C.



A large, dark blue hydraulic pump or motor is shown in a three-quarter view, facing left. It has a prominent shaft with a splined end on the left side. The background is a solid dark blue color.

HYDRAULIK PUMPUR, MOTORAR OG KØLARAR

HYDRAULIC PUMPS, MOTORS
AND COOLERS



DANFOSS ORBIT MOTORAR

DANFOSS ORBIT MOTORS

KJ hefur stórt úrval av Danfoss Orbit hydraulikkmotorum á goymslu, t.d. OMR, OMM, OMT o.s.fr.

KJ has a wide range of Orbit hydraulic engines from Danfoss on stock. For example OMR, OMM, OMT etc.



PARKER/DENISON PUMPUR

PARKER/DENISON PUMPS

KJ hefur flestallar Parker innmatar á goymslu. Eisini hefur KJ akslar, pakningssett og búsnningar til Parker/Denison pumpur.

KJ keeps most of Parker cart.kits on stock. Besides, KJ also has shafts, sealkits and bushings for Parker/Denison pumps.



TANNHJÓLSPUMPUR

GEAR PUMPS

KJ hefur flest allar tannhjólspumpur í bólki tvey og trý á goymslu. KJ hefur í bólki tvey, úr 4cc upp til 40cc og í bólki trý, úr 27cc upp til 90cc á goymslu.

KJ has most gear pumps in group two and three in stock. KJ keeps group 2 from 4cc up to 40cc and in group 3 from 27cc up to 90cc in stock.



REXROTH PUMPUR

REXROTH PUMPS

KJ umboðar Rexroth og bjóðar stórt úrval av pumpum, ventillum, spolum o.tl.

KJ represents Rexroth and we offer a wide range of pumps, valves, coils etc.

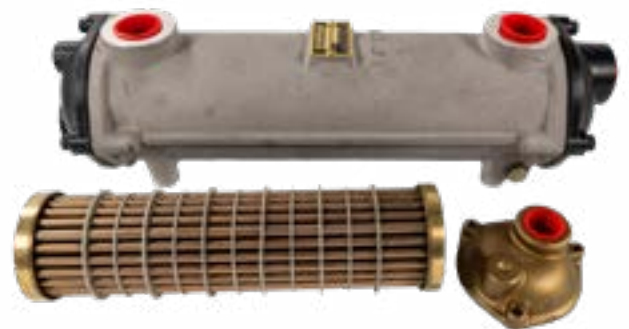


BOWMAN KØLARA

BOWMAN OIL COOLER

KJ veitir Bowman hydraulikkølar. Hesir kølarar tryggja effektiva køling av hydraulikkølu, fyrbygja ovhiting og økja um effektivitetin í nýtsluni.

KJ supplies Bowman hydraulic oil coolers. These coolers ensure efficient cooling of hydraulic oil, prevent overheating, and improve operational efficiency.







VATNPUMPUR

WATER PUMPS





PEDROLLO PUMPUR

PEDROLLO PUMPS

KJ hefur stórt úrval av Pedrollo pumpum á goymslu. KJ kann bjóða Pedrello pumpur við impellara úr bæði rustfríum og úr alu.bronsu.

KJ has a wide range of Pedrollo general purpose pumps on stock. KJ can offer Pedrollo pumps with impellers in stainless steel and alu.bronze.



GRUNDFOS PUMPUR

GRUNDFOS PUMPS

KJ bjóðar stórt úrval av pumpum og eykalutum frá Grundfos. Vit kunnu eisini bjóða heildarloysnir til eitt nú smoltstøðir, skip o.a. KJ hevur tekniska og sterka vitan innan økið.

KJ offer a wide range of pumps and spare parts from Grundfos . We can also offer complete and comprehensive solutions for smolt hatcheries, maritime vessels etc. KJ has a strong and technical knowledge in this area.





SAMSON VAKUUMPUMPUR

SAMSON PUMPS

KJ umboðar Samson Pumps í Føroyum. KJ hevur Samson pumpur og eykalutir á goymslu.

KJ represents Samson Pumps in Faroe Islands. KJ can offer Samson pumps and spare parts, as they are an integral part of the stock.



The background of the entire page is a dark blue, semi-transparent image of a mechanical bearing assembly. The bearing is the central focus, showing its outer ring and inner components. The text is overlaid on this image.

LEGUR OG TRANSMISSIÓNIR

BEARINGS AND TRANSMISSIONS

LEGUR OG TRANSMISSIÓNIR

BEARINGS AND TRANSMISSIONS

KJ hefur stórt úrval av legum og transmissiónum á goymslu. Umframt hetta, hefur KJ stórt úrval av kíla-reimum, koblingum, tannhjól og ketum v.m.

Úr stóra úrvalinum kann nevast kúlulegur, vinkulkontaktlegur, sferiskar rullulegur, koniskar rullulegur og sylindriskar rullulegur. Umframt legur, eru eisini legu-húsar í plasti, stáli og rustfríum á goymslu.

Á goysmluni er eisini stórt úrval av koblingum. Til dæmis Rexnord, softex v.m.

KJ hefur umframt hetta, eisini stórt úrval av ketum. Simplex, duplex og triplex. Hesar eru eisini á goymslu í rustfríum.

KJ keeps a wide range of bearings and transmissions on stock. Furthermore, KJ also has a wide range of V-belts, gears and chains etc.

Out of the vast array of spare parts are for example roller bearings, angular contact bearings, spherical bearings, conical bearings and cylindrical roller bearings. KJ also keeps bearing housings in plastics, steel and stainless steel on stock.

The warehouse contains a large range of couplings. Rexnord and softex to mention a few.

KJ has a wide range of chains on stock. Simplex, duplex and triplex. These are also available in stainless.





INDUSTRI- VENTILAR

INDUSTRY VALVES



BUTTERFLYVENTILAR

BUTTERFLY VALVES

KJ býðar eitt breitt úrval av butterfly ventillum, alt eftir hvat kundin ynskir. KJ hevur ventilar á goymslu frá DN40 og heilt up til DN400. KJ hevur bæði LUG og Wafer ventilar á goymslu, við NBR ella EPDM pakningi á goymslu. Hesir ventilar fáast við rustfríum og alu. bronsu spjældrum.

KJ offers a wide selection of butterfly valves. We always keep valves on stock, from DN40 up to DN400 - KJ has both LUG and Wafer, as well as valves with NBR and EPDM seals. These valves are available with stainless and alu.bronze gates.



ELAFLEX KOMPENSATORAR

ELAFLEX COMPENSATORS

Kompensatorar verða brúktir sum liðiligar samlingar millum rörskipanir. Bygnaðurin og longdin (installatíonsstøddin) er viðurkend sum altjóða verandi standard.

Rubber Expansion Joints (compensators) are used as flexible connectors within pipe systems. Their construction and lengths (installation sizes) have since become internationally recognised standard



CYL SPAKAVENTILAR

CYL KNIFE VALVES

KJ hevur Cyl spakaventilar úr DN100 til DN450 á goymslu. Allir eru við luftsyndara. Til hesar hevur KJ eisini reparatíonskitt, pakningar o.a. á goymslu.

KJ keeps Cyl knife valves from DN100 up to DN450 on stock. All are supplied with pneumatic cylinders. For these KJ also offers repkits, gaskets, etc. on stock.







SEPERATORAR

SEPERATORS





ALFA LAVAL

ALFA LAVAL

KJ hefur eitt breitt úrval av eykalutum til Alfa Laval. Eykalutir bæði til varmavekslara og seperatorar. Til dæmis service kit (intermediate og major), pakningar, reimar o.a.

KJ has a wide range of Alfa Laval spare parts on stock. Spare parts for such as seperators and heat exchangers, for example service kits (intermediate and major), seals, belts etc.



GEA WESTFALIA

GEA WESTFALIA

KJ hefur eitt breitt úrval av eykalutum til GEA Westfalia seperatorar - pakningar, service kit o.a

KJ has a wide range of GEA Westfalia spare parts, for exaple for seperators - seals, service kits and more.



The background of the entire page is a dark blue color. Faintly visible in the background are several hydraulic valves and magnetic coils, rendered in a lighter shade of blue, creating a technical and industrial atmosphere.

HYDRAULIK VENTILAR OG MAGNETSPOLAR

HYDRAULIC VALVES AND MAGNETIC-COILS

MAGNETSPOLAR

MAGNETIC-COILS

KJ veitir magnetspolar m.a frá Parker, Atos og Rexroth – allir kendir fyri álítandi og slitsterka stýring av hydraulikkventilum. Parker spolar eru gjørdir til áhaldandi nýtslu og fáast í ymiskum útgávum og spenningum. Atos spolar eru bygdir til krevjandi industriumhvørvi, við høgari haldgóðsku, standard DIN-góðkenning og neyvri stýring av Atos-ventilum. Rexroth spolar hava ein harðan bygnað við IP69K-góðkenning og Class-H hitatólum, og eru ætlaðir til tung umhvørvi við nágreiniligari ventilstýring.

KJ supplies solenoid coils from Parker, Atos, and Rexroth – all known for reliable and durable control of hydraulic valves. Parker coils are designed for continuous duty and are available in various versions and voltages. Atos coils are built for demanding industrial environments, offering high durability, standard DIN connections, and precise control of Atos valves. Rexroth coils feature a robust design with IP69K protection and Class H insulation, making them suitable for harsh environments requiring precise valve control.



HYDRALIK VENTILAR

HYDRAULIC VALVES

KJ hevur stórt úrval av ventilum. So sum magnetventilar, yvirsenturventilar, rættningventilar, proportional ventilar, stýriventilar. KJ veitir merkir so sum Hawe, Parker, Danfoss, Walvoil, Hydranor.

KJ offers a wide range of valves, including solenoid valves, relief valves, directional control valves, proportional valves, and control valves. KJ supplies brands such as Hawe, Parker, Danfoss, Walvoil, and Hydranor.





LUFT

PNEUMATICS



LUFTSLANGUR PA

AIRHOSE PA

Væl egnaðar til vinnuliga nýtslu. PA slangur tryggja góða slitstyrk. Sergjört, stívt polyamid tilfar, ið er framleitt sambært eco-design leisti.

Tried-and-tested for industrial applications, PA tubing guarantees excellent durability due to its stable long-term mechanical properties. Special grade of semi-rigid polyamide manufactured according to our Eco-Design approach.



LUFTFITTINGS

PNEUMATIC FITTINGS

KJ hefur stórt úrval av Parker push-in luftfittings á goymslu. Hesi kunnu veitast bæði í plasti og í stáli, úr 3mm til 16mm.

KJ has a wide range of Parker push-in pneumatic fittings on stock. In both plastic and steel, going from 3mm up to 16mm.



PARKER LUFTSYLINDARAR OG VENTILAR

PARKER PNEUMATIC CYLINDERS AND VALVES

KJ hefur luftsyndarar og luftventilar frá Parker á goymslu. KJ kann veita samlaða eind av stýriskipan til luft og luftsmyrjing.

KJ keeps pneumatic cylinders and valves from Parker on stock. KJ can supply customers with a complete set of pneumatic system as well as pneumatic lubrication.





PRISMA ACTUATORAR

PRISMA ACTUATOR

Prisma luft-aktuatorar eru álitandi og slitsterkir pneumatískir aktuatorar til ventilstýring. Teir fáast í alúminíum, rustfríum stáli og polyamid, hava góða korrosjónsverju. Lúka altjóða standardir sum ISO, DIN og NAMUR.

Prisma air actuators are reliable and durable pneumatic actuators for valve control. Available in aluminium, stainless steel, and polyamide, they offer excellent corrosion resistance and strong torque. Compliant with international standards such as ISO, DIN, and NAMUR.



KEMIKALIIR

CHEMICALS





TANK CLEAN ALKALINE 25L

TANK CLEAN ALKALINE 25L

TANKCLEAN ALKALINE er eitt ikki-etsandi, heavy-duty alkalískt reins, ið reinsar oljur, í tangum, ið bera serstaka coating. Tað er sergjørt til at betra um reinsigóðsku, samstundis sum tað fyrbyggir etsandi álopum. TANKCLEAN ALKALINE kann eisini nýtast sum luktdoyvandi reins, í flestøllum støðum. Hetta er sera góð sápa til vasking av skipsdekkum og tangum.

TANKCLEAN ALKALINE is a non-caustic heavy-duty alkaline cleaner formulated for cleaning oils from tanks with special coatings. It is specially designed to improve cleaning efficiency while overcoming the limitations imposed by caustic based cleaning compounds. TANKCLEAN ALKALINE can also be used as a deodorizing wash in all applications. This soap is suitable for cleaning decks onboard vessels and tanks.



TANK CLEAN ALKALINE EXTRA 25L

TANK CLEAN ALKALINE EXTRA 25L

TANKCLEAN ALKALINE EXTRA verður nýtt til at beina burtur oljur og restir í tangum. Tað kann eisini nýtast sum endalig viðgerð til reinsing av tangum. Kann harumframt nýtast til rustfrítt stál og epoxyлагаðar tangar. Verður hartil nýtt til ketlar og sum luktdoyvandi reins. Hetta er sera góð sápa til vasking av skipsdekkum og tangum.

TANKCLEAN ALKALINE EXTRA is used for removal of edible and animal oil residues in cargo tanks. It is also used as a final treatment for cleaning tanks. TANKCLEAN ALKALINE EXTRA is suitable for use on stainless steel and epoxy coated tank materials. TANKCLEAN ALKALINE EXTRA is used for cleaning boiler furnace and as a neutralising agent. This soap is suitable for cleaning decks onboard vessels and tanks.



VALVE TREAT 25L

VALVE TREAT 25L

Við at koyra VALVE TREAT í bunkriolju, verður vanadium og sodium deaktiverað. Smeltipunktið á vanadium pentoxide er 675 °C og á sodium sulfat er það 880 °C. Táið VALVE TREAT verður nýtt, verða evnini við vanadium og sodium sulfat, við evnunum í VALVE TREAT, smeltbar á umleið 1100 °C.

Adding VALVE TREAT to bunker fuel forms a complex compound, that deactivates the vanadium and sodium common in heavy bunker fuels. The melting point of vanadium pentoxide is 675°C and that of sodium sulphate is 880°C. When VALVE TREAT is employed, the complexes formed with vanadium and sodium sulphate by the agents in VALVE TREAT melt at about 1100°C.



FOT SLUDGE DISPERSANT 25L

FOT SLUDGE DISPERSANT 25L

FOT SLUDGE DISPERSANT verður nýtt umborð á dampskipum og skipum annars, ið brenna leivdir av brennievnum. Hendan nýggja loysnin spjaðir evju, brútur vatn í oljumylking, ið ger leivdirnar meir homogenar. Hetta hevur við sær, at brenningin gerst betur. Henda vøran betrar um sentrifugala loysing, sirmger og innspræning. FOT SLUDGE DISPERSANT er ein nýggj viðgerð til brenniolju, ið á betri hátt spjaðir evjuna, so motorurin verður hildin reinur og so viðlíkahaldsfríur sum tilber.

FOT SLUDGE DISPERSANT is used in both steam and motor vessels burning residual fuel oils. This new innovated treatment disperses sludge, breaks water in oil emulsions, making the residual fuel more homogeneous for combustion improvement. This product also improves centrifugal separation, atomisation and injector spray pattern. FOT SLUDGE DISPERSANT is a new generation fuel oil treatment, with a unique ability to disperse the sludge, keeping the pre-combustion system clean and maintenance free.





SEPERATOR DISC CLEANER 25L

SEPERATOR DISC CLEANER 25L

SEPARATOR DISC CLEANER er ein serstök blanding av surfaktantum, upploysingarevnum og sýrum, ið øll beina burtur carbonrestir o.a. frá smyrjoliðu og brenniliúseperatorum.

SEPARATOR DISC CLEANER is an especially formulated blend of surfactants, solvents and acids designed to remove carbonaceous and varnish deposits from lube oil and fuel oil separator discs.



BOILER TREAT COMBI 25L

BOILER TREAT COMBI 25L

BOILER TREAT COMBI er ein flótandi blanding av molekylurum vekt-lutum, nevtaliserandi organiskum sýrum og etsingum, reinsi og evju viðgerðarevnum. Er gjørt til at økja um pH-virði á ketilsvatni (10.5 - 11.0), ið forðar etsing mest móguligt, við trústi úr 7 til 35 bar.

BOILER TREAT COMBI is a liquid combination of low molecular weight components, neutralised organic acids and corrosion, scale and sludge conditioners. The specialised blended low molecular weight compounds are designed to elevate boiler water pH to levels, which reduce corrosion to the minimum possible in boilers (pH 10.5 - 11.0) with pressure of 7 to 35 bar.



RUST REMOVER

RUST REMOVER

RUST REMOVER er sera væl hóskaði til at beina burtur súrevni, klor, nitrat, amid, aminosýrur og onnur salt, nevtalir og alkaliska dálking, so sum kalsiumklorid, kalsiumnitrat o.tl. Eisini hóskar hetta sera væl til at reinsa restir eftir sjóvask. Reinsar og klárnar aluminium, messing og kopar. Ger flatuna klára, so tað er klárt at verða málað.

RUST REMOVER is suitable to remove oxides, chlorides, nitrates, amides, amines and other salts, neutral and alkaline contaminations like calcium chloride, calcium nitrate etc. Also very suitable to remove lime deposits after hot seawater washes. Cleans and brightens aluminium, brass and copper, renders the surface ready and suitable for painting



TEST KIT NITRITE

TEST KIT NITRITE

Vecom Test Kit Nitrite er eitt lættbrúkt og álitandi royndarsett til at mæta nitrit í kælivatnið. Settið kann mæta frá 0 upp til 3400 ppm og er serliga ætlað til installatióinir, har COOLTREAT NCLT verður nýtt. Tað inniheldur royndarrør, dýsu og reagentsgløs til meira enn 170 mátingar.

Vecom Test Kit Nitrite is an easy-to-use and reliable test kit for measuring nitrite in cooling water systems. The kit measures from 0 up to 3400 ppm and is specifically designed for installations using COOLTREAT NCLT. It includes test tubes, syringe, and reagent bottles for more than 170 tests.



TEST KIT CHLORIDE

TEST KIT CHLORIDE

Vecom Test Kit Chloride er eitt einfalt og álitandi royndarsett til at mæta kloridinnihald í ketlum og kælivatnið. Settið kann mæta frá 0 til 400 ppm og er ætlað til nýtslu saman við av BOILER TREAT COMBI, ONE SHOT og COOLTREAT NCLT. Settið inniheldur royndarfløsku og reagentsgløs til fleiri hundrad mátingar.

Vecom Test Kit Chloride is a simple and reliable test kit for measuring chloride content in boilers and cooling water systems. The kit measures from 0 to 400 ppm and is intended for use with BOILER TREAT COMBI, ONE SHOT, and COOLTREAT NCLT. It includes a test bottle and reagent bottles for several hundred tests.



TEST KIT ALKALINITY P&M

TEST KIT ALKALINITY P&M

Vecom Test Kit Alkalinity P&M er eitt álitandi royndarsett til at mæta P- og M-alkalinitet í øllum sløgum av ketlum. Settið kann mæta frá 0 til 400 ppm og verður brúkt saman við ALKALINITY CONTROL og øðrum Vecom ketilsviðgerðum. Tað inniheldur royndarfløsku, dýsu og reagentsgløs til umleið 150–187 mátingar.

Vecom Test Kit Alkalinity P&M is a reliable test kit for measuring P and M alkalinity in all types of boilers. The kit measures from 0 to 400 ppm and is used together with ALKALINITY CONTROL and other Vecom boiler treatments. It includes a test bottle, syringe, and reagent bottles for approximately 150–187 tests.





KEMI CHEMISTRY





BREMSUREINS

BRAKE CLEANER

WEICON Brake Cleaner er eitt universalreins til verkstaðsídnaðin. Reinsar, avfeittar og avdampar, uttan at lata skitt eftir sær.

WEICON Brake Cleaner is a universal cleaner for the mechanical industry, which cleans, degreases and evaporates without leaving residues.



AT-44

AT-44

WEICON AT-44 er eitt silikonfrítt all-round spray við PTFE.

WEICON AT-44 is a silicone-free all-round spray with PTFE.



RUSTLOYSARI & KONTAKT SPRAY

RUST REMOVER AND CONTACT SPRAY

WEICON rustloysara og kontaktspray ger hetta idéelt til umvælingar og viðlíkahald.

The six-fold function of WEICON Rust Loosener and Contact Spray makes it indispensable for repairs, maintenance and service works.



ELEKTROREINS

ELEKTRO CLEANER

WEICON Electro Contact Cleaner er eitt spesialreins til skjóta reinsan og avfeiting av øllum slögum av dálkaðum og rustaðum kontaktum. Reinsið er serliga ætlað til reinsan av elektroniskum og mekaniskum lutum.

WEICON Electro Contact Cleaner is a special cleaner for the fast and effective cleaning and degreasing of all kinds of soiled or corroded contacts. It is specially developed for the cleaning of electronic and mechanical components.



VA-100 LÍM

VA-100 GLUE

Sekundlím til gummi og plastik við miðal tjúkkleiki og miðallangari herdingstíð. SEGA-sertifiserað.

Strong adhesive for rubber and plastic with medium viscosity. Slightly longer cure time. ISEGA-certified.



BLACK-SEAL

BLACK-SEAL

Black-Seal er ein svørt fuga, ið er sera mótstøðufør móti høgum hitastigum (+280°C). Fugan er frí frá uppløysingarevnum, sterk, tolur olju, feitt, hátrúst og heldur sera leingi. Hon er sera elastisk (brotstyrkin er á umleið 500%)

Black-Seal is black, high-temperature-resistant (+280°C/+536°F), free of solvents, strong, oil-resistant, grease-resistant, pressure-resistant, resistant to ageing and extremely elastic (breaking elongation of approx. 500%).





FLEX 310 HVÍTT

FLEX 310 WHITE

WEICON Flex 310 M Classic Hvítt er ein sterk fuga, ið kann málást á. Heldur sær í skapi og útsjónd sera leingi og er mótstøðufør móti UV strálum. Toler fesk- og saltvatn og er uttan silikon, isocyanat, halogenir og upploysingarevnir.

WEICON Flex 310 M Classic White is strong, paintable (wet-on-wet), sandable, has an outstanding resistance to ageing and good resistance to UV rays. It is resistant to fresh and salt water and is free of silicone, isocyanate, halogens and solvents.



FLEX 310 SUPER-TACK

FLEX 310 SUPER-TACK

WEICON Flex 310 M Super-Tack er serdeilis sterk fuga, ið kann málást á. Heldur sær í skapi og útsjónd sera leingi og er mótstøðufør móti UV strálum. Toler fesk- og saltvatn og er uttan silikon, isocyanat, halogenir og upploysingarevnir. Baserað á MS polymer.

WEICON Flex 310 M Super-Tack is very strong, paintable "wet-on-wet", sandable, weather-resistant, resistant to UV rays and free of silicone, isocyanate, halogens and solvents, and non-corrosive. Flex 310 M Super-Tack is a strong, elastic adhesive based on MS polymer.



WEICONLOCK 305-42

WEICONLOCK 305-42

Tetningur til hydraulikk ið hevur DVGW góðkenning. Miðal tjúkkleiki, miðal styrki og verður avtikin við vanligum amboðum

Hydraulic and with DVGW approval. Medium viscosity, medium strength and is disassembled with normal tools



WEICONLOCK 305-77

WEICONLOCK 305-77

Gevindtetningur við DVGW góðkenning. Høgur tjúkkleiki, miðal styrki og verður avtikin við vanligum amboðum.

Threadsealing with and DVGW approval. High viscosity, medium strength and is disassembled with normal tools



WEICON BR

WEICON BR

Epoxy-baserað harpiks fylla, ið er gjørd til at fylla bláshol og til viðvíkahald av messing lutum. Kann nýtast í øllum maritima ídnaðinum og eisini í flestøllum øðrum vinnuligum greinum. Verður ofta nýtt til umvæling av bátaskrúvum.

The epoxy resin system WEICON BR is particularly suitable for filling blowholes and for repairing and reconditioning bronze parts and bronze castings. It can be used in the entire marine and shipping industry as well as in many other industrial sectors. Is often used when repairing boat screws.



OLJUMÁTTIR

OIL MATS

Máttir til olju. Stødd: 40 x 50 cm. Tilfar: Smeltað polypropylene. Uppísúgving fer fram í tí løtu at kontakt er við flaturnar. Fiprarnar eru í natúrligari hydrofobiskari støðu. Fiprarnar vísa vatn frá sær og flóta. Tað eru 100 máttir í hvørjum sekki.

Extra heavy oil only pads. Dimension: 40 x 50 cm - Composition: Melt-blown polypropylene. Starts absorbing on contact. Melt-blown polypropylene fibers are left in their natural hydrophobic state. These hydrophobic fibers repel water (and float) while only absorbing oils and other hydrocarbons. There are 100 mats in each bag.



KLÚTAR / VISKISTYKKIR

CLOTHS

Teir tiltiknu klútarnir (viskistykki), KJ kann eisini veita bummullis klútar og litaðar. Hesir klútarnir fáast í 10kg sekkjum.

The well known oil-wiping cloths. KJ can also supply cotton cloths and colored cloths. These cloths are supplied in 10kgs bags.



OLJU-SPERRA

OIL BOOM

Oljusperrur eru flótandi eindir, sum taka upp olju og forða henni í at breiða seg, tá hon er komin í vatnið. Oljusperrur taka upp olju og kolvetni. Taka IKKI upp vatn. Sperrurnar halda fram at flóta, sjálvt tá tær eru heilt fyltar.

Oil Booms are floating devices that absorb oil and stop it from spreading once it is in the water. Oil booms absorb oil and hydrocarbons and will NOT absorb water. The booms will continue to float, even when fully saturated.



The background is a dark blue gradient. It features two large, semi-transparent rectangular panels. The top panel contains a grid of small, dark blue icons representing various types of seals and gaskets. The bottom panel contains a grid of larger, dark blue icons representing different sizes and types of O-rings. On the right side of the page, there are several large, faint, circular icons representing O-rings of various diameters.

PAKNINGAR

SEALS



PAKNINGAR

SEALS

KJ hefur stórt úrval av alskyns pakningum á goymslu - stempulpakningar, simmeringar, o-ringar, skaviringar o.tl.

KJ offers a large range of seals in stock – including piston seals, oil seals (shaft seals), O-rings, scraper seals, and more.



The background of the entire page is a dark blue, semi-transparent image of a hose clamp. The clamp is shown from a slightly elevated, angled perspective, highlighting its hexagonal shape and the central screw mechanism. The lighting is soft, creating subtle gradients and shadows that define its form.

RØR- OG SLANGUKLEMMUR

TUBE AND HOSE CLAMPS



RØRBERARAR

TUBE CLAMPS

Rørberar við dekkplátum, sveisiplátum og boltum. KJ hefur eitt stórt og breitt úrval av rørberarum frá 6mm upp til 60mm. KJ veitur eisini dekk og sveisiplátur í rustfríum stáli.

Pipe carriers with deck plates, welding plates and bolts. KJ has a wide range of pipe carries on stock, going from 6mm up to 60mm. KJ supplies also deck and welding plates in stainless steel.



RUSTFRÍ SLANGUBOND

HOSE CLAMPS

Rustfrítt slanguband G5. Slanguband úr 8mm til 250mm við einum bolti

Stainless hose clamps. From 8mm to 250mm. Single bolt.



AXILOCK RØRKLEMMUR

AXILOCK IV NBR

Axilock rørklemmurarnar eru gjórdar til at avloysa tærvín á flansum, sveising og øðrum. Loysnin skal vera skjót og lætt, soleiðis at eindirnar verða beindar saman. Við at seta klemmurarnar saman í hvørjum enda, veitir Axilock trygd og góðsku á høðum støði. Hvær klemma er 100% gummibundin, og tryggjar harvið rust-mótstøðuføri og verður hetta viðlíkahildið gjøgnum alla livitíðina á klemmuni.

The Teekay Axilock range is designed to replace the need for flanging, welding, pipe grooving and pipe threading by providing a quick and easy solution to joining plain-end pipe. Incorporating grip rings at each end of the fitting, the Teekay Axilock offers high levels of security by locking the pipes together under pressure. Each coupling is 100% rubber-lined, ensuring that high levels of corrosion resistance are maintained throughout the life of the coupling.



| STØDD SIZE | TOLERANSA TOLERANCE | TRÝST PRESSURE | FÓRING CASING | BOLTAR BOLTS | PAKINGUR SEAL |
|---------------------------|------------------------|-------------------|------------------|-----------------|------------------|
| | mm | bar | | | |
| 21,3mm Axilock-S type IV | 21,0/21,6 | 16 | AISI 316L | AISI 316 | NBR & EPDM |
| 26,8mm Axilock-S type IV | 26,6/28,4 | 16 | AISI 316L | AISI 316 | NBR & EPDM |
| 33,7mm Axilock-S type IV | 33,3/34,1 | 16 | AISI 316L | AISI 316 | NBR & EPDM |
| 38,0mm Axilock-S type IV | 37,0/39,0 | 16 | AISI 316L | AISI 316 | NBR & EPDM |
| 42,4mm Axilock-S type IV | 41,4/43,4 | 16 | AISI 316L | AISI 316 | NBR & EPDM |
| 48,3mm Axilock-S type IV | 47,3/49,3 | 16 | AISI 316L | AISI 316 | NBR & EPDM |
| 60,3mm Axilock-S type IV | 59,0/62,0 | 16 | AISI 316L | AISI 316 | NBR & EPDM |
| 76,1mm Axilock-S type IV | 75,0/78,0 | 16 | AISI 316L | AISI 316 | NBR & EPDM |
| 88,9mm Axilock-S type IV | 88,0/91,0 | 16 | AISI 316L | AISI 316 | NBR & EPDM |
| 114,3mm Axilock-S type IV | 113,0/116,0 | 16 | AISI 316L | AISI 316 | NBR & EPDM |
| 133,0mm Axilock-S type IV | 132,0/135,0 | 16 | AISI 316L | AISI 316 | NBR & EPDM |
| 139,7mm Axilock-S type IV | 139,0/142,0 | 16 | AISI 316L | AISI 316 | NBR & EPDM |
| 168,3mm Axilock-S type IV | 167,0/170,0 | 16 | AISI 316L | AISI 316 | NBR & EPDM |
| 219,1mm Axilock-S type IV | 218,0/221,0 | 16 | AISI 316L | AISI 316 | NBR & EPDM |



RUSTFRÍAR PARIKLEMMUR

POWER CLAMPS

Rustfríar pariklemmur. Sterkar slanguklemmur, sum kunnu nýtast til alskyns sløg av slangum. Rustfríar við tveimum umbrakoboltum. KJ hevur goymslu úr 32mm til 350mm í hesum. Rørklemman hevur rustfríðar umbrakoboltar.

Stainless pari power clamps. Strong hose clamps that can be used for multiple purposes. Stainless, with two bolts. KJ has stock from 32mm to 350mm in this particular clamp. Bolts are also stainless.



POWERBRIDGE SLANGUKLEMMMA

POWER BRIDGE HOSE CLAMP

Power bridge slanguklemma til spiral-súgvíslangur. Klemman er úr rundjarni og í spiral-formi, so at hon spennur millum spiralarnar. Eru á goymslu úr 4" upp til 12"

Power bridge hose clamp for spiral suction hoses. The clamp is made of round steel and designed in a spiral shape to tighten between the spirals. Available from stock in sizes from 4" up to 12".





RØRFITTINGS

TUBE FITTINGS



RUSTFRÍTT, AMETAL OG GALVANISERAÐ GEVINDFITTINGS

STAINLESS THREADED FITTINGS

KJ hefur eitt stórt úrval av BSP rørfittings á goymslu í galvaniseraðum, rustfríum og ametal. KJ hefur úr 1/4" upp til 4" á goymslu.

KJ has a wide range of BSP fittings on stock in galvanized, stainless and ametal. KJ has from 1/4" up to 4" on stock.



SVEISFITTINGS

WELDING FITTINGS

Vit hava mest vanligu sveisfittingsini, so sum flansar, vinklar, tee og reduktiónir á goymslu úr 1" upp til 18". KJ kann veita sveisfittings í rustfríum, aluminium og vanligum stáli

KJ has the most common welding fittings, such as flanges, bends, tees and reductions, on stock. From 1" up to 18". KJ can supply welding fittings in stainless, aluminium and steel.







RØR
TUBES



HYDRAULIKKRØR

HYDRAULIC TUBE

KJ hefur eitt stórt úrval av elgalvaniseraðum hydraulikkrörum, úr 4mm til 90mm.

KJ has a wide range of electroplated hydraulic fittings on stock



RUSTFRÍTT HYDRAULIKKRØR 316AISI

HYDRAULIC TUBE STAINLESS 316AISI

KJ hefur eisini eitt stórt úrval av rustfríum, súruføstum hydraulikkrörum, úr 6mm til 60mm. Øll rörini eru AISI316.

KJ also has a wide range of stainless, acid resistant hydraulic tubes on stock, from 6mm up to 60mm. All tubes are AISI316.



GEVINDSTONG

THREAD ROD

KJ hefur eitt stórt úrval av gevindstongum, bæði í rustfríðum, elgalvaniseraðum og heittgalvaniseraðum góðsi. Av rustfríum gevindstongum hefur KJ goymslu úr 3mm upp í 30mm og í elgalvaniseraðum úr 6mm upp í 30mm. Í heittgalvaniseraðum hefur KJ úr 16mm upp í 27mm.

KJ has a wide range of threaded rods on stock, in stainless steel, electrogalvanized and hot-dip galvanized material. In stainless KJ keeps from 3mm up to 30mm, in electrogalvanized from 6mm up to 30mm and in hot-dip galvanized from 16mm up to 27mm on stock.



RUSTFRÍTT GEVINDRØR

STAINLESS STEEL TUBES FOR THREADING

KJ hevur eitt stórt úrval av rustfríum gevindrørum á goymslu, úr 1/4" til 4".

KJ keeps a wide range of stainless threaded tubes on stock, from 1/4" up to 4".

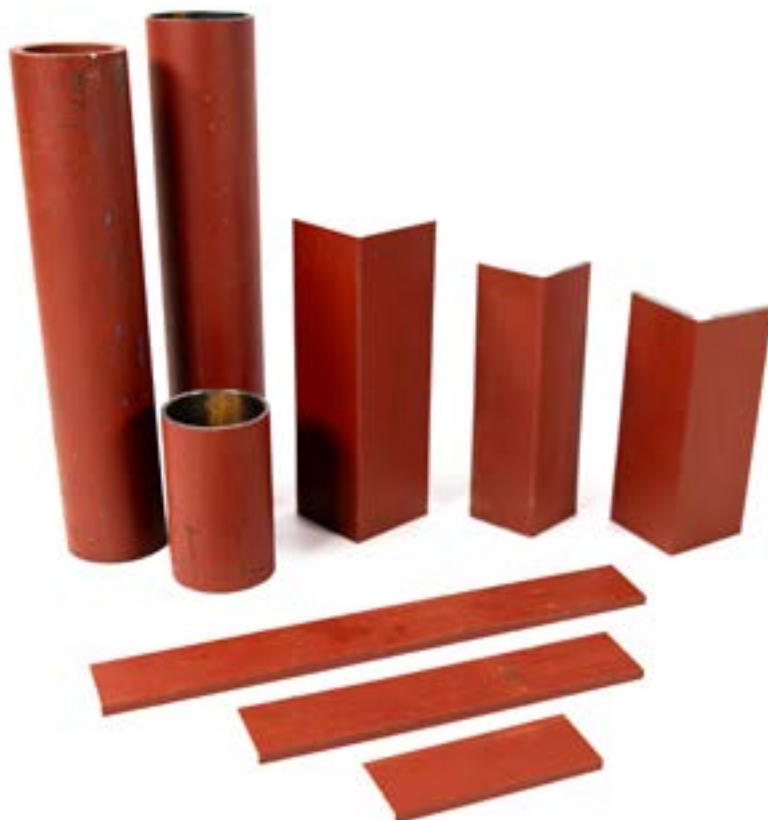


PRIMAÐ STÁL

PRIMED STEEL

KJ hevur eitt stórt úrval av primaðum stáli á goymslu. Umframt rør, hevur KJ millum annað flatstál, vinkulstál, rørprofilar og annað primað stál á goymslu.

KJ has a wide range of primed steel on stock. Besides tubes, KJ has flat bars, angled bars, pipe profiles and other primed steel goods on stock.





The background of the entire page is a dark blue, semi-transparent image of a large industrial valve. The valve has a circular body with four mounting holes around its perimeter and a handwheel on top. The text is overlaid on this image.

ALFABETISKT INNIHALDSYVIRLIT

TABLE OF CONTENTS IN ALPHABETICAL ORDER



ALFABETISKT INNIHALDSYVIRLIT

TABLE OF CONTENTS IN ALPHABETICAL ORDER

| | | | |
|---------------------------|----|--|----|
| Alfa Laval | 60 | Pakningar | 80 |
| Aquaflex | 19 | Parker/Denison pumpur | 46 |
| Aspiroil | 16 | Parker luftsyndarar og ventilar | 65 |
| Aspir PU/H | 15 | Parker PTS (Tracking System) | 33 |
| AT-44 | 74 | Pedrollo pumpur | 50 |
| Axilock rørklemmur | 83 | Powerbridge slanguklemma | 84 |
| Black-Seal | 75 | Primað stál | 91 |
| Boiler Treat Combi 25L | 70 | Prisma Actuatorar | 66 |
| Boll & Kirch filtrur | 43 | Racor filtruhúsar | 41 |
| Bowman kólara | 47 | Ragno Acqua | 20 |
| Bremsureins | 74 | RAGNO N 20 BAR (LIFT-UP) | 21 |
| BSP rørfittings | 36 | Rexroth pumpur | 47 |
| Butterflyventilar | 56 | Rørberarar | 82 |
| Camlock koblingar | 24 | Rustfríar pariklemmur | 84 |
| Cintropur NW filtruhúsi | 44 | Rustfrí hátrýstslangutrumla | 18 |
| Cintropur trio-filtruhúsi | 44 | Rustfrí slangubond | 82 |
| Cyl spakventilar | 57 | Rustfrítt, Ametal og Galvaniserað gevindfittings | 86 |
| Danfoss Orbit motorar | 46 | Rustfrítt gevindrør | 91 |
| Elaflex kompensatorar | 57 | Rustfrítt hydraulikkør 316AISI | 90 |
| Elektroreins | 75 | Rustloysari & kontakt spray | 74 |
| Ermeto rørfittings | 36 | Rust remover | 70 |
| Filtrur | 42 | Samson Vakuumpumpur | 52 |
| Filtruhúsar | 41 | Separ filtruhúsi SWK2000/18/U Duplex | 40 |
| Filturmátta PST290 | 43 | Separ filtruhúsi SWK2000/40/U Duplex | 40 |
| Fiskakobling | 25 | Seperator Disc Cleaner 25L | 70 |
| Fiskapumpuslanga | 28 | Shark slanga | 13 |
| Fiskaslangufittings | 29 | Shieldmaster | 34 |
| Flex 310 Hvítt | 76 | Slangubend | 29 |
| Flex 310 Super-Tack | 76 | Slangufittings | 37 |
| Flexfab kólivatnsslanga | 15 | Slanguklemma | 29 |
| Fóðurslanga | 19 | Slangureduktiún | 29 |
| Fot Sludge Disperant 25L | 69 | Slangustussur | 29 |
| GEA Westfalia | 60 | Slanguvögga, rustfrí | 30 |
| Gevindstong | 90 | Snarkobling | 29 |
| Grundfos pumpur | 51 | Spulislanga 10bar | 17 |
| Hydralik ventilar | 62 | Spulislanga 20bar | 17 |
| Hydraulikkør | 90 | Suction bell | 30 |
| Hydraulikkslanga 462ST | 32 | Superflex PU R | 12 |
| Hydraulikkslanga 797ST | 32 | Superjet Hátrýsts Spulislanga | 18 |
| Hydr.lyn-koblingar | 37 | Sveisifittings | 87 |
| IQ LIFT-UP SLAGA | 21 | Svøvil | 30 |
| Jamaica HD | 14 | Svøvil | 38 |
| JIC rørfittings | 36 | Svøvil 90° | 38 |
| Klútar / Viskistykki | 78 | Tank Clean Alkaline 25L | 68 |
| Legur og transmissiúnir | 54 | Tank Clean Alkaline Extra 25L | 68 |
| Luftfittings | 64 | Tannhjólspumpur | 46 |
| Luftslangur PA | 64 | Test kit alkalinity P&M | 71 |
| Luisiana superelastics | 10 | Test kit chloride | 71 |
| Magnetspolar | 62 | Test kit nitrite | 71 |
| Multi oil | 16 | VA-100 Lím | 75 |
| Oljumáttir | 77 | Valve Treat 25L | 69 |
| Olju-sperra | 78 | Vatnfiltruhúsar | 41 |
| Oregon PU PS Blá | 11 | Weicon BR | 77 |
| Oregon PU PS Reyð | 11 | Weiconlock 305-42 | 76 |
| ORFS rørfittings | 37 | Weiconlock 305-77 | 77 |

ALFABETISKT INNIHALDSYVIRLIT

TABLE OF CONTENTS IN ALPHABETICAL ORDER



| | | | |
|------------------------------------|----|---|----|
| Airhose PA | 64 | Jamaica HD | 14 |
| Alfa Laval | 60 | JIC fittings | 36 |
| Antistatic Fish Feeding Pipe | 19 | Luisiana superelastics | 10 |
| Aquaflex | 19 | Magnetic-Coils | 62 |
| Aspiroil | 16 | Multi oil | 16 |
| Aspir PU/H | 15 | Oil boom | 78 |
| AT-44 | 74 | Oil mats | 77 |
| Axilock IV NBR | 83 | Oregon PU PS Blue | 11 |
| Bearings and transmissions | 54 | Oregon PU PS RED | 11 |
| Black-Seal | 75 | ORFS fittings | 37 |
| Boiler Treat Combi 25L | 70 | Parker/Denison pumps | 46 |
| Boll & Kirch filter | 43 | Parker pneumatic cylinders and valves | 65 |
| Bowman oil cooler | 47 | Parker PTS (Tracking System) | 33 |
| Brake Cleaner | 74 | Pedrollo pumps | 50 |
| BSP fittings | 36 | Pneumatic fittings | 64 |
| Butterfly valves | 56 | Power brigde hose clamp | 84 |
| Camlock couplings | 24 | Power clamps | 84 |
| Cintropur NW | 44 | Primed steel | 91 |
| Cintropur Trio Filter Housing | 44 | Prisma Actuator | 66 |
| Cloths | 78 | Quick release coupling | 29 |
| Cyl knife valves | 57 | Racor filterhousing | 41 |
| Danfoss Orbit motors | 46 | Ragno Acqua | 20 |
| Elaflex compensators | 57 | RAGNO N 20 BAR (LIFT-UP) | 21 |
| Elektro Cleaner | 75 | Rexroth pumps | 47 |
| Ermeto fittings | 36 | Rust remover | 70 |
| Filter housings | 41 | Rust remover and contact spray | 74 |
| Filter housings (water) | 41 | Samson Pumps | 52 |
| Filter mats | 43 | Seals | 80 |
| Filters | 42 | Separ filterhousing SWK2000/18/U Duplex | 40 |
| Fish coupling | 25 | Separ filterhousing SWK2000/40/U Duplex | 40 |
| Fish Hose Fittings | 29 | Seperator Disc Cleaner 25L | 70 |
| Fish Pump Hoses | 28 | Shark Hose | 13 |
| Flex 310 Super-Tack | 76 | Shieldmaster | 34 |
| Flex 310 White | 76 | Stainless steel tubes for threading | 91 |
| Flexfab cooling water hose | 15 | Stainless threaded fittings | 86 |
| Fot Sludge Disperant 25L | 69 | Suction bell | 30 |
| Gear pumps | 46 | Superflex PU R | 12 |
| GEA Westfalia | 60 | Superjet high-pressure water hose | 18 |
| Grundfos pumps | 51 | Swivel joints | 38 |
| High-pressure hose reel | 18 | Swivel joints 90° | 38 |
| Hose bend | 29 | Tank Clean Alkaline 25L | 68 |
| Hose clamp | 29 | Tank Clean Alkaline Extra 25L | 68 |
| Hose Clamps | 82 | Test kit alkalinity P&M | 71 |
| Hose connector | 29 | Test kit chloride | 71 |
| Hose fittings | 37 | Test kit nitrite | 71 |
| Hose holder, stainless | 30 | Thread rod | 90 |
| Hose reduction | 29 | Tube clamps | 82 |
| Hose swivel | 30 | VA-100 Glue | 75 |
| Hydraulic hose 462ST | 32 | Valve Treat 25L | 69 |
| Hydraulic hose 797ST | 32 | Waterhose 10bar | 17 |
| Hydraulics quick-release couplings | 37 | Waterhose 20bar | 17 |
| Hydraulic tube | 90 | Weicon BR | 77 |
| Hydraulic Tube Stainless 316AISI | 90 | Weiconlock 305-42 | 76 |
| Hydraulic valves | 62 | Weiconlock 305-77 | 77 |
| IQ lift-up hose | 21 | Welding fittings | 87 |

Pelagic Fish Pumps

Sizes ranging from 8" to 20" are more than enough to cater to any vessel. Manufactured mainly from Marine Grade Aluminium and Stainless Steel, there is no surprise how durable and strong these pumps are. For extra protection a rubber bumper is vulcanized to the casing. SeaQuest Fish Pumps are available for purse seining or trawling applications. Storage cradle are also available, manufactured completely from Stainless Steel.



***SeaQuest Fish pumps are regarded as
No.1 worldwide***

There is always room for improvement!

Winches and deck equipment especially made for large catches. Multidrive solutions ensure dynamic performance and redundancy. Our proven technology, reduced weight, and footprint comined with efficiency ensures reduced fuel consumptions and use of valuable deck space.

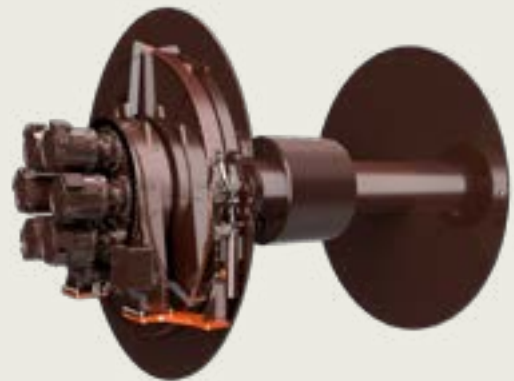


Trawl winch

- Robust multidrive
- Dynamic performance
- Redundant
- Market leading efficiency

Net winch

- Improved tension control and mooring functionality
- Robust multidrive
- Redundant



Purse seine winch

- Ultrasmooth deployment
- Recovers and reuses energy
- Improved control in harsh conditions
- Compact design

• Making the seven seas
your playground

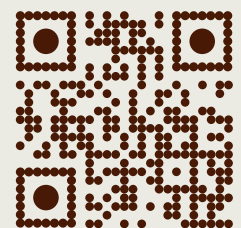
Evotec Control System

- More and more systems require even more focus on rapid and reliable control.



Evotec Autotrawl

- Developed in close cooperation with experienced fishing operators all over the world.
- System prepared for solutions up to 7 trawl winches.



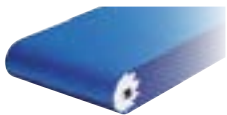
• Making the seven seas your playground

Smarter. Safer. More Sustainable.



Worldwide leading product range

Fabric-based conveyor and processing belts



Monolithic reinforced conveyor belts



Timing belts



Machine tapes



Power transmission belts



Sprockets, flights, welding profiles, etc.



Plastic modular belts



Chains (slat and conveyor chains)



Seamless belts



Round belts



Profiles, Guides, Wear strips



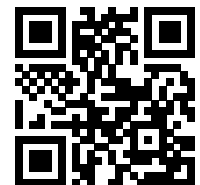
Joining, cutting & preparing devices

Services

- Comprehensive consulting and technical support
- Belt selection and calculation assistance
- Fabrication, assembly and local installation services
- Customer training programs
- Belt monitoring, inspections, analyses and process optimization proposals
- Design assistance for customized solutions

Industries we serve

- Food & Beverage
Meat, poultry, dairy, bakery, confectionery
- Packaging
Automated packaging lines, box handling
- Material Handling & Logistics
Airport baggage handling, parcel sorting
- Textile
Yarn processing, weaving, nonwoven
- Automotive
Assembly lines, tire production
- Printing & Paper
Post-press, finishing
- Medical & Pharmaceutical
Cleanroom belts, precise positioning
- Tobacco, Wood, and Others
Specialty applications





World-class Product Range

Fabric Conveyor Belts



- Food belts
- Heavy conveyor belts
- Light conveyor belts
- Processing belts
- Tobacco belts
- Treadmill belts

Plastic Modular Belts & Conveyor Chains



- Straight belts
- Radius and spiral belts
- Slat and conveyor chains
- Gravity roller plates
- Roller transfer plate

Fabric-based Processing Belts



- Folder-gluer belts
- Machine tapes
- Power transmission belts
- Spindle tapes
- Seamless and endless belts
- Rotary molder belts

Timing Belts



- Open-end belts
- Wide timing belts
- Flex timing belts
- Flat belts

Monolithic Belts



- Habasit® Cleandrive
- Extruded round belts
- Extruded T-shaped belts
- Extruded V belts
- Monolithic elastic belts

Accessories & Tools



- Wear strips and guides
- Retainer rings
- Cleaning In Place (CIP) unit
- Profiles and cleats
- Belt scrapers
- Tools and hot presses

Services We Provide

- Five service centers offering fabrication, assembly, and local installation services
- Quick Ship program for accelerated shipping (expedited services)
- Customer training programs
- Comprehensive consulting and technical support
 - Belt selection and calculation assistance
 - Belt monitoring, inspections, analyses, and process optimization proposals

Industries We Serve

- Food & Beverage
 - Meat, poultry, dairy, bakery, confectionery
- Packaging
 - Automated packaging lines, box handling
- Material Handling & Logistics
 - Airport baggage handling, parcel sorting
- Textile
 - Yarn processing, weaving, nonwoven
- Automotive
 - Assembly lines, tire production
- Printing & Paper
 - Post-press, finishing
- Medical & Pharmaceutical
 - Cleanroom belts, precise positioning
- Spiral, Wood, and Other Specialty Applications

Deck Cranes

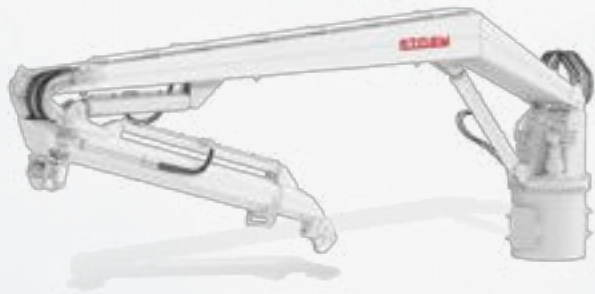
Storm philosophy is to build reliable, robust and strong performing cranes through smart and innovative design and quality fabrication.

Knuckle Boom Cranes

Standard or custom design with robust construction for long time use and minimal maintenance.

Range: **7m to 30m**

Hauling power: **1T to 15T**



Single Boom Cranes

Deck cranes available in a wide range. Standard or custom design with robust construction for long time use and minimal maintenance.

Range: **7m to 30m**

Hauling power: **1T to 15T**

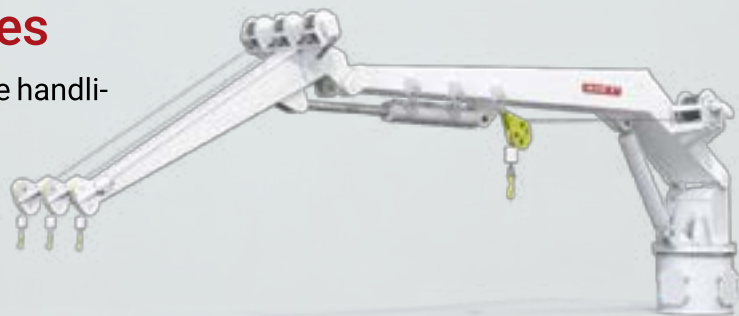
Hose Handling Cranes

Cranes specially designed for Hose handling on Livefish Carries.

Range: **12m to 20m**

SWL (Hose winches): **1T to 2T**

SWL (Main winch): **5T to 8T**



Net Handling Equipment

Storm offers a wide range of standard products and specific products at customer request.

Net Cranes

Standard design with robust construction. Can be delivered with arm lengths to fit different size of vessels.

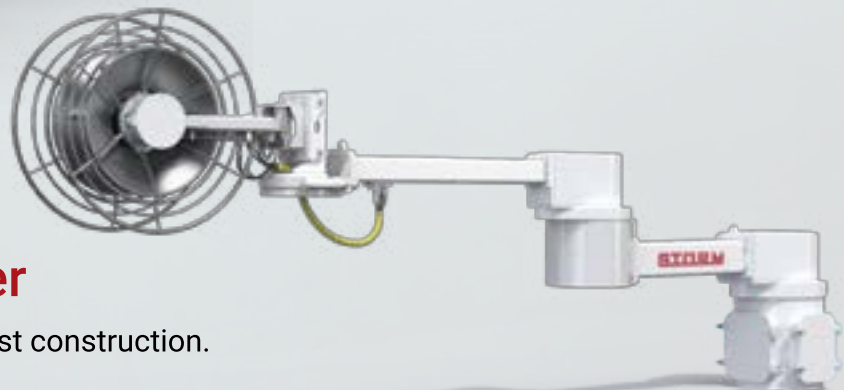
Hauling power (Roller unit): **3000kp to 5000kp**
SWL (Winch): **2.5T to 6T**



Nethaulers

Standard design with robust construction. Delivered with hydraulic or electrical drive.

Hauling power: **15T to 30T**



Corkline Stacker

Standard design with robust construction.

Range: **5m to 8m**
Hauling power: **3000N**

CRITICAL POWER

1 MWe Generator with Yanmar Engine



Tel: +298 407000
sales@kj.fo



YANMAR
ENGINE

Efficiency & Reliability

HIMOINSA
A YANMAR COMPANY

DIESEL & GAS GENERATORS



On-Site Power

We not only offer
QUALITY PRODUCT
But also
ENGINEERING
SOLUTIONS

Tel: +298 407000
sales@kj.fo

HIMOINSA
A YANMAR COMPANY



AQUACULTURE SEGMENT

ELEVATING YOUR AQUACULTURE OPERATIONS



FOLDABLE KNUCKLE BOOM CRANES

/// Their sophisticated crane geometry and compact construction make PALFINGER MARINE foldable knuckle boom cranes a convenient, multi-functional tool for effortless loading and unloading of equipment – especially in confined working areas. They can be customized to meet offshore rules and regulations and come with a variety of options and additional features.



An aerial photograph of a fishing boat on the ocean, showing the deck and surrounding water. The boat is white with a blue stripe along the hull.

EFFICIENT AND RELIABLE LIFTING SOLUTIONS

Based on many years of experience, PALFINGER has developed a range of cranes that meet the lifting requirements of the aquaculture industry. Typical applications include service vessels, workboats, barges and live fish carriers.

Having delivered more than 2,500 cranes to the industry worldwide, PALFINGER is the preferred supplier for the tried and trusted marine cranes like foldable knuckle boom cranes, telescopic boom cranes, knuckle boom cranes and stiff boom cranes.

PALFINGER cranes offer a compact construction and low weight. Thanks to standardized components and intuitive operation, installation and integration are seamless, requiring minimal downtime. Central Remote Control enables the operator to control each crane separately using two joysticks, directly from the bridge.

A close-up photograph of a yellow telescopic knuckle boom crane, showing its articulated joints and hydraulic cylinders against a blue sky.

TELESCOPIC KNUCKLE BOOM CRANES

/// PALFINGER's telescopic knuckle boom cranes are designed specifically for heavy lifting with a wide outreach requirement, and they offer the advantage of requiring minimal deck space despite their high power output.

A photograph of a blue telescopic boom crane mounted on the deck of a white ship. The crane's boom is extended upwards and outwards.

TELESCOPIC BOOM CRANES

/// PALFINGER's telescopic boom cranes are based on a pedestal slewing design with hydraulic cylinder luffing. The boom extension is a telescopic inner section that enables a more flexible and wider operational radius and leaves the crane stored in a compact position. Their low weight and less complex design make them particularly maintenance-friendly. One of the optionally available features is a multiple winch system. This makes efficient, flexible and precise handling of multiple lifting and positioning tasks possible.

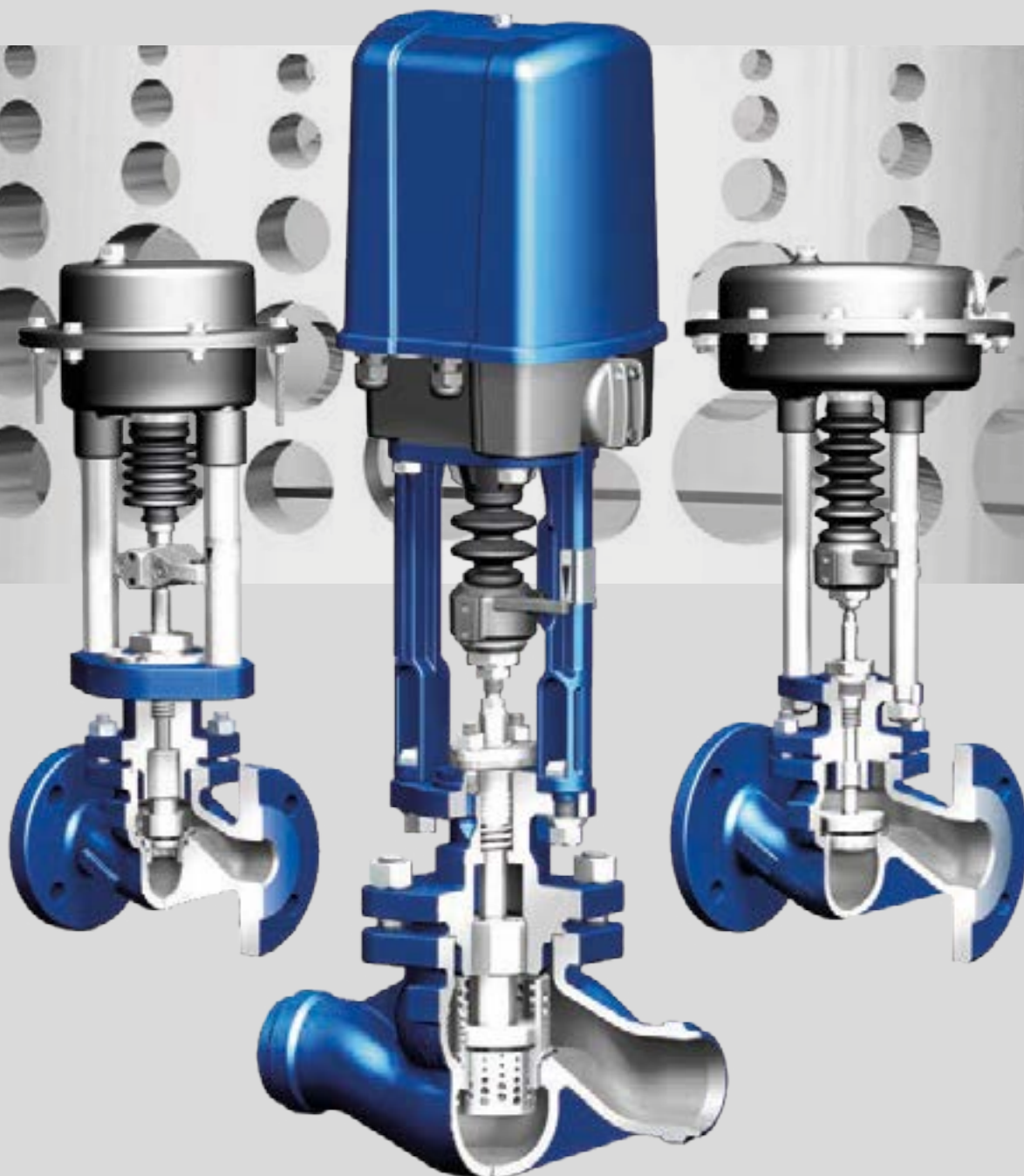
Tel: +298 407000
sales@kj.fo

PALFINGERMARINE.COM

STEVI®

Expert Control

INDIVIDUAL. PRECISE. DURABLE



Tel: +298 407000 | sales@kj.fo





Parker Distributor
Tel: +298 407000
sales@kj.fo

Your needs . . .

***BETA* MARINE**

Seagoing

Saildrives

Inland Waterways

Marine Generating Sets

Spares & Support



- 36 years of customer centred focus, listening to needs & delivering long term value solutions.
- Specialists in customer advice & support at all points of a products voyage.
- Superb after-sales service via our approved national & international re-engine centres and authorised dealer network.
- Extensive range of 10 to 98 HP heat exchange propulsion engines with mechanical or hydraulic gearboxes.
- Optional secondary domestic 12V alternator or 3.5/5.0 kVA travel power.
- A range of 14 to 56 HP heat exchange propulsion engines with 2 saildrive solution options.
- Heat exchange Generating Sets 4 to 58 kVA with or without super silent acoustic housings.
- 5 year self-service warranty*.

*Recreational use, terms & conditions apply.

**. . . our tailored solutions
delivering reliability and peace of mind**

www.betamarine.co.uk

Tel: +298 407000

Tel: +44 (0)1452 723492 Email: sales@betamarine.co.uk

Your needs . . .

Seagoing

Saildrives

Inland Waterways

Marine Generating Sets

Spares & Support

Marine Generating Sets to 650 kVA

- Powered by: Beta Kubota, Baudouin, Cummins, Perkins or Scania marine diesel engines - heat exchanger, keel or radiator cooling.
- Acoustic housings designed to customer specifications.
- Manufactured to Classification Society requirements: Lloyds Register, Det Norske Veritas, Bureau Veritas, Germanischer Lloyd, ABS, CCS, etc.



Marine Propulsion Engines 10 to 150 HP

- Built to your specification from our extensive menu of options.
- Optional bespoke CAD design and fabrication of installation feet.
- Factory engine installation service for your net or pot hauler hydraulic pump.
- Superb installation support and after sales service from our comprehensive national and international network.



**. . . our tailored solutions
delivering reliability and peace of mind**





kj.fo

sales@kj.fo
+298 40 70 00